



DUCTLESS ACCESSORIES PRODUCT CATALOG

INSTALL. MAINTAIN. REPAIR.

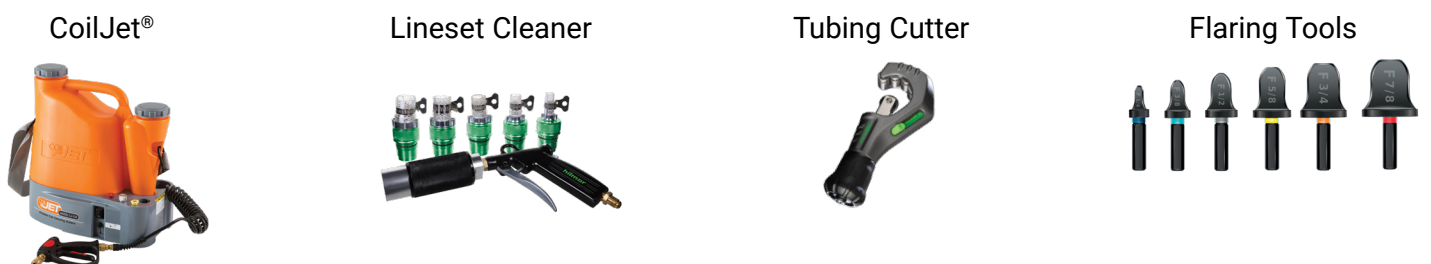


DiversiTech Ductless - we are dedicated to helping you find all of equipment mounting, to condensate management, to indoor air

No other company offers our



Suggested Ductless Tools:



the products you need for any ductless mini-split project. From quality, our ductless solutions are designed to get the job done.

comprehensive solutions and support.

SpeediChannel® & EasyGuard® Lineset Covers

Weather Protective Covers

Repair & Replacement Parts

Hef-T-Bracket™ Wall Brackets

Hef-T-Foot™ Kits

Mini-Split Mounting Supports
Aluminum, Stainless Steel and Powder-Coated Steel

Anti-Vibration Pads

Pads
Concrete and Plastic



Look for A2L compatible products throughout this catalog.

For full product offering, scan or click to visit diversitech.com



TABLE OF CONTENTS

EQUIPMENT MOUNTING	5-17
CONDENSATE MANAGEMENT	18-19
LINESETS & FITTINGS	20-26
COMPONENTS & CONSUMABLES	26-30
ELECTRICAL & REPLACEMENT PARTS	31-34
TOOLS	35-47
INDOOR AIR QUALITY	47

DiversiTech offers a huge selection of ductless system accessories to make any installation faster and easier. From pads and mounting solutions to whips and cleaners, DiversiTech offers the products that make ductless system installation and maintenance a breeze. Check out our full line of ductless system accessories here or at **diversitech.com**.



UltraLite® Lightweight Concrete Equipment Pads



UC1636-3

A true concrete equipment pad at the weight of plastic (about 2.5 lbs. per square foot). UltraLite® is strengthened by miles of fiber in each square foot of fiber-cement coating. This fiber allows the pad to flex instead of cracking or breaking. The textured surface prevents the condensing unit or portable generator from sliding, and allows water drainage, while the engineered expanded polystyrene (EPS) core prevents warping and provides a solid bottom to resist settling. Unaffected by soil conditions, ultraviolet (UV) light, temperature extremes, and other weather conditions.

ITEM	DESCRIPTION	UOM	OM
UC1636-3	UltraLite® Pad 16x36x3	EA	30
UC1838-3	UltraLite® Pad 18x38x3	EA	30
UC1838-3CA	UltraLite® EQ Pad 18x38x3	EA	30
UC2436-3	UltraLite® Pad 24x36x3	EA	15
UC2436-3CA	UltraLite® EQ Pad 24x36x3	EA	15
UC2442-3	UltraLite® Pad 24x42x3	EA	15
UC2448-3	UltraLite® Pad 24x48x3	EA	15
UC2448-3CA	UltraLite® EQ Pad 24x48x3	EA	15

E Lite® Plastic Equipment Pads



EL1838-3

E Lite's rugged design provides uniform and generous ribbing for optimum, self-leveling ground support without inserts. The result is a pad that is lightweight, but not too light. Each pad is molded with a size label and a symbol representing content of recycled material.

ITEM	DESCRIPTION	UOM	OM
EL1838-3	E Lite® Pad 18x38x3	EA	32
EL2436-2	E Lite® Pad 24x36x2	EA	22
EL2436-3	E Lite® Pad 24x36x3	EA	16
EL2448-3	E Lite® Pad 24x48x3	EA	32

HunkLite® Equipment Pads



L2436-2

HunkLite® Pad is a support base for outdoor HVAC equipment. Made from 3000+ psi solid concrete with continuous steel reinforcement, this pad is extremely durable even in extreme outdoor conditions. HunkLite pads are specifically designed for local markets where solid concrete is required.

ITEM	DESCRIPTION	UOM	OM
L2436-2	HunkLite® Pad 24x36x2	EA	20
L2436-3	HunkLite® Pad 24x36x3	EA	15

EcoPad™ Black Plastic Equipment Pads

An injection molded equipment pad created from 100% recycled materials to minimize environmental impact. It does not require any additional equipment for moving and handling. EcoPad™ is resistant to impact, ultra-violet degradation and weathering (virtually impervious to climatic variations), and will not crack, flake, or warp. Drillable to permit installation of refrigerant and electrical lines under and through the pad and to allow equipment to easily secure to the pad.

ITEM	DESCRIPTION	UOM	OM
EP1838-3	EcoPad™ 18x38x3	EA	32
EP2436-2	EcoPad™ 24x36x2	EA	24
EP2436-3	EcoPad™ 24x36x3	EA	16
EP2448-3	EcoPad™ 24x48x3	EA	32



EP1838-3

CladLite® Pads

CladLite® Pads are lightweight concrete equipment pad that combines the strength and look of a perfectly poured concrete pad without the extreme weight. It is used as an outdoor support base for industrial applications such as condensers, heat pumps, etc. CladLite lightweight concrete equipment pads are specially engineered to be 80% lighter than solid concrete yet durable enough to withstand the harshest environment conditions.

ITEM	DESCRIPTION	UOM	OM
1636-3	CladLite® Pad 16x36x3	EA	20
2436-2	CladLite® Pad 24x36x2	EA	24
2436-3	CladLite® Pad 24x36x3	EA	20
2442-2	CladLite® Pad 24x42x2	EA	24
2448-3	CladLite® Pad 24x48x3	EA	20



2436-3

The Hurricane Pad™

The Hurricane Pad™ equipment pads are designed specifically for all Florida counties in hurricane wind zones up to 75 mph. Check with your local DiversiTech® distributor or our online wind table chart to confirm if this pad is correct for your application.

ITEM	DESCRIPTION	UOM	OM
H1840-4	The Hurricane Pad™ 18x40x4	EA	16
H2436-4	The Hurricane Pad™ 24x36x4	EA	8
HMD1840-4	Hurricane Miami-D Pad™ 18x40x4	EA	10
HT1840-4	Hurricane T Class Pad™ 18x40x4	EA	10
HT2436-4	Hurricane T Class Pad™ 24x36x4	EA	5
H2448-4	The Hurricane Pad™ 24x48x4	EA	8
HT2448-4	Hurricane T Class Pad™ 24x48x4	EA	5
HMD2448-4	Hurricane Miami-D Pad™ 24x48x4	EA	5

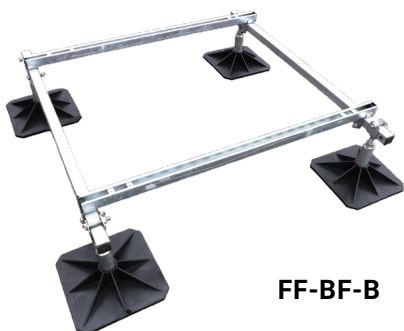


H2436-4

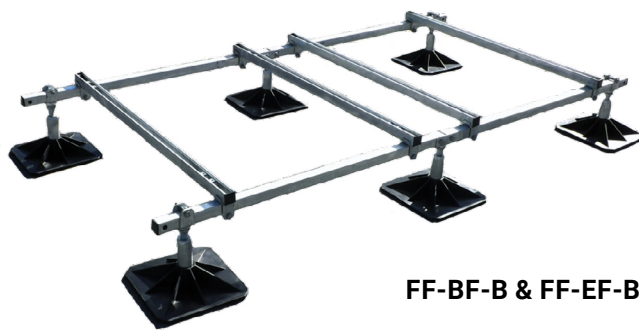
Quick-Sling® Flexi Frame Equipment Stands

The galvanized steel Flexi Frame is a strong weather-resistant stand for mounting mini-splits and VRF equipment. The Flexi Frame can be configured with a base and multiple extensions to meet most application requirements.

ITEM NO.	DESCRIPTION	UOM	OM
FF-BF-B	Flexi-Base Frame (47-1/4" Rails)	EA	1
FF-EF-B	Flexi-Extension Frame (47-1/4" Rails)	EA	1
FF-BF-1500-B	Flexi-Base Frame 1500 (59" Rails)	EA	1
FF-EF-1500-B	Flexi-Extension Frame 1500 (59" Rails)	EA	1
FF-L1621	Flexi Frame Leg, 16-21in. Tall Ext. Kit (2/PK)	EA	1



FF-BF-B

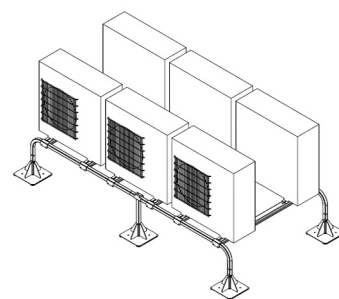


FF-BF-B & FF-EF-B

Quick-Sling® Multi-Unit Mini-Split Super Stands®

The Quick-Sling® QSMS3001 family of multi-unit Super Stand for Mini-Splits provides a safe, stable platform for mounting multiple ductless condensers on one stand. The base stand accommodates up to six outdoor mini-split condensing units. Additional condensing units can be added to this base stand with the use of the QSMS3001-**EXT extender kit (2 additional units per extender kit).

ITEM	DESCRIPTION	UOM	OM
QSMS3001-12	Mini-Split Super Stand - 12 in. Tall	EA	1
QSMS3001-12EXT	Mini-Split Super Stand - 12 in. Ext. Kit	EA	1
QSMS3001-18	Mini-Split Super Stand - 18 in. Tall	EA	1
QSMS3001-18EXT	Mini-Split Super Stand - 18 in. Ext. Kit	EA	1
QSMS3001-24	Mini-Split Super Stand - 24 in. Tall	EA	1
QSMS3001-24EXT	Mini-Split Super Stand - 24 in. Ext. Kit	EA	1

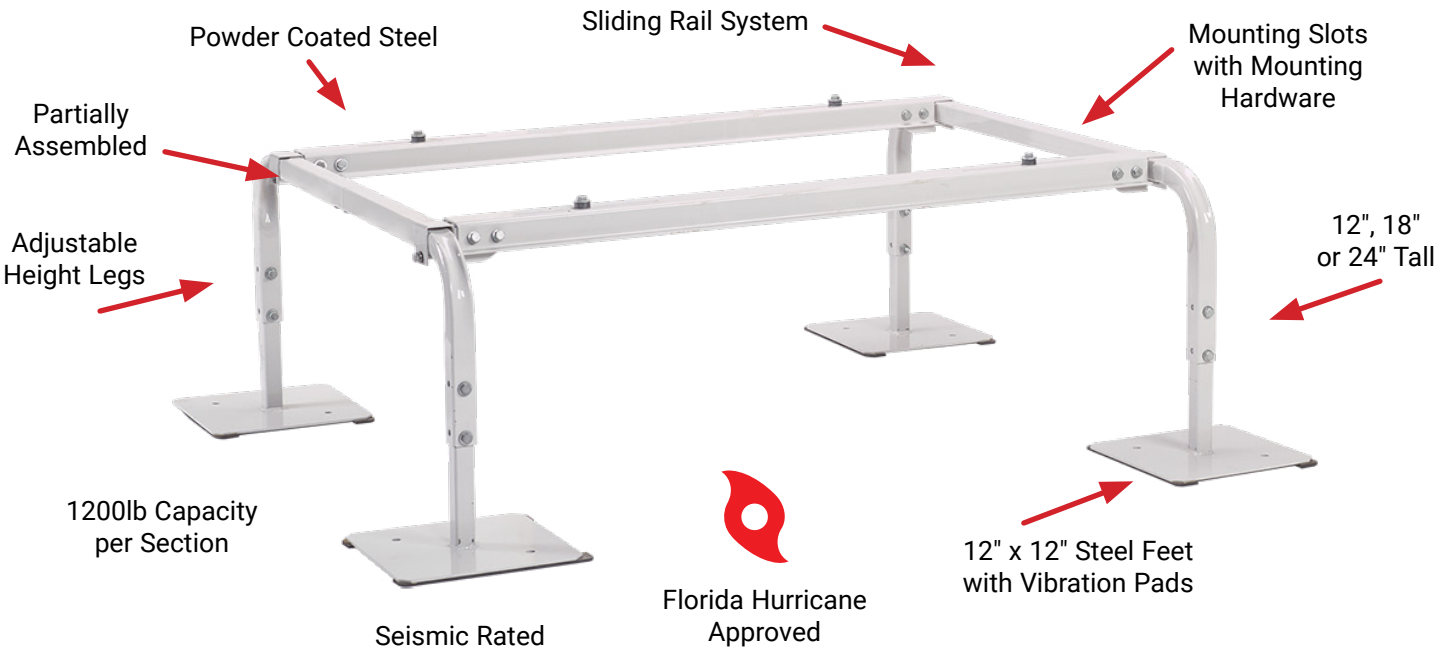


QSMS3001-18

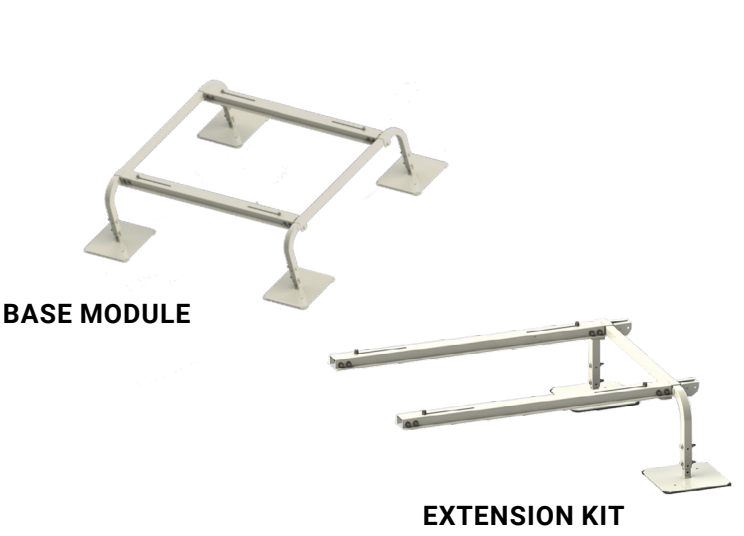
Quick-Sling® VRF/VRV Super Stand®

The VRF/VRV Super Stand Equipment Stands are now simpler to order, easier to size and compatible with more equipment model families.

Base and Extension Architecture



DESCRIPTION	RAIL LENGTH	HEIGHT			UOM	OM
		12"	18"	24"		
Base Modules	48"	QSSB48-12	QSSB48-18	QSSB48-24	EA	1
	62"	QSSB62-12	QSSB62-18	QSSB62-24	EA	1
	74"	QSSB74-12	QSSB74-18	QSSB74-24	EA	1
Extension Kit	48"	QSSX48-12	QSSX48-18	QSSX48-24	EA	1
	62"	QSSX62-12	QSSX62-18	QSSX62-24	EA	1
	74"	QSSX74-12	QSSX74-18	QSSX74-24	EA	1



**230-B2L****230-B2XL**

Hef-T-Bracket™

Used for supporting condensing units, Hef-T-Brackets feature a cross bar that is attached to a wall, and two L-shaped brackets that are hooked and bolted into place on the cross bar. The condensing unit is mounted onto the L-shaped brackets, and fastened using the bolts and anti-vibration washers provided.

ITEM NO.	DESCRIPTION	UOM	OM
230-B2M	Hef-T-Bracket™, Medium, 18 in., with hinge	EA	1
230-B2L	Hef-T-Bracket™, Large, 21 in., with hinge	EA	1
230-B3M	Hef-T-Bracket™, Medium, 18 in.	EA	1
230-B3L	Hef-T-Bracket™, Large, 21 in.	EA	1
230-B2XL	Hef-T-Bracket™, Extra Large, 26 in.	EA	1
230-A2S	Hef-T-Bracket™, Small, 16 1/2 in. Painted Aluminum	EA	1

Adjustable top hinge.
Provides proper offset when
installed on a siding wall.

Available on 230-B2M and 230-B2L Only

**QSWB3000**

Quick-Sling® Wall Bracket - Foundation Mount

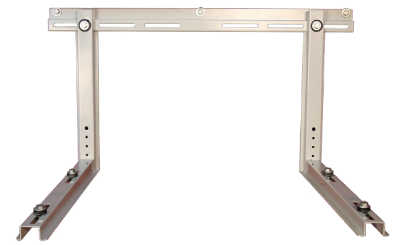
This unique, 300 lb. condenser mounting bracket is designed to install directly to a foundation and still provides 7" clearance between the wall and the unit. The shelf depth is 19" and allows plenty of room for piping and service.

ITEM	DESCRIPTION	UOM	OM
QSWB3000	Wall Bracket w/Rails, Heavy Duty	EA	1

Quick-Sling® Wall Brackets - Flat Wall or Siding

These hurricane rated wall brackets are strong, easy to install and are designed to be mounted into framing studs at 12" or 16" on center. These fit most mini-split models on the market today and provides the required distance between the wall and the condenser for optimal air flow. The QSWB2000 is rated for 350 lbs. and the heavy duty QSWB4000 is rated for 600 lbs.

Both models are also available in 316 stainless steel.



QSWB2000



ITEM	DESCRIPTION	UOM	OM
QSWB2000	Wall Bracket w/Rail, Holds up to 350 lbs.	EA	1
QSWB2000SS	Stainless Steel Wall Bracket w/Rail, Holds up to 350 lbs.	EA	1
QSWB2000-3	Wall Bracket w/Rail, 3 Mounting Arms, Holds up to 350 lbs.	EA	1
QSWB4000	Wall Bracket w/Rail, Holds up to 500 lbs.	EA	1
QSWB4000SS	Stainless Steel Wall Bracket w/Rail, Holds up to 500 lbs.	EA	1

Quick-Sling® Mini-Split Wall Brackets

The Quick-Sling® Wall Bracket provides a quick, safe, and stable way to mount your unit on the wall. They allow for easy access during installation, service, and maintenance.



QSWB1000

ITEM NO.	DESCRIPTION	UOM	OM
QSWB1000	Flat Wall - Wall Bracket, Holds up to 500 lbs.	EA	1
QSWB1100	Flat Wall - Wall Bracket, with Slider Tracks, Holds up to 500 lbs.	EA	1
QSWB2000-3	Wall Bracket, 3 Mounting Arms, Holds up to 350 lbs.	EA	1
QSWB2004	Large Wall Bracket, Holds up to 350 lbs.	EA	1
QSWB2004SS	Large Wall Bracket, Stainless Steel, Holds up to 350 lbs.	EA	1
QSWB2005	Large Wall Bracket, 3 Mounting Arms, Holds up to 500 lbs.	EA	1



QSWB2005



QSMS1206



QSMS1201



QSMS1201-PAL

Quick-Sling® Mini-Split Stands

Our full line-up of mini-split stands consist of many different sizes, configurations and materials to fit all types of installations, from BASIC offerings to more feature-rich PRO options. They provide a safe, stable platform for mounting ductless condensers and are quicker to install than many alternatives.

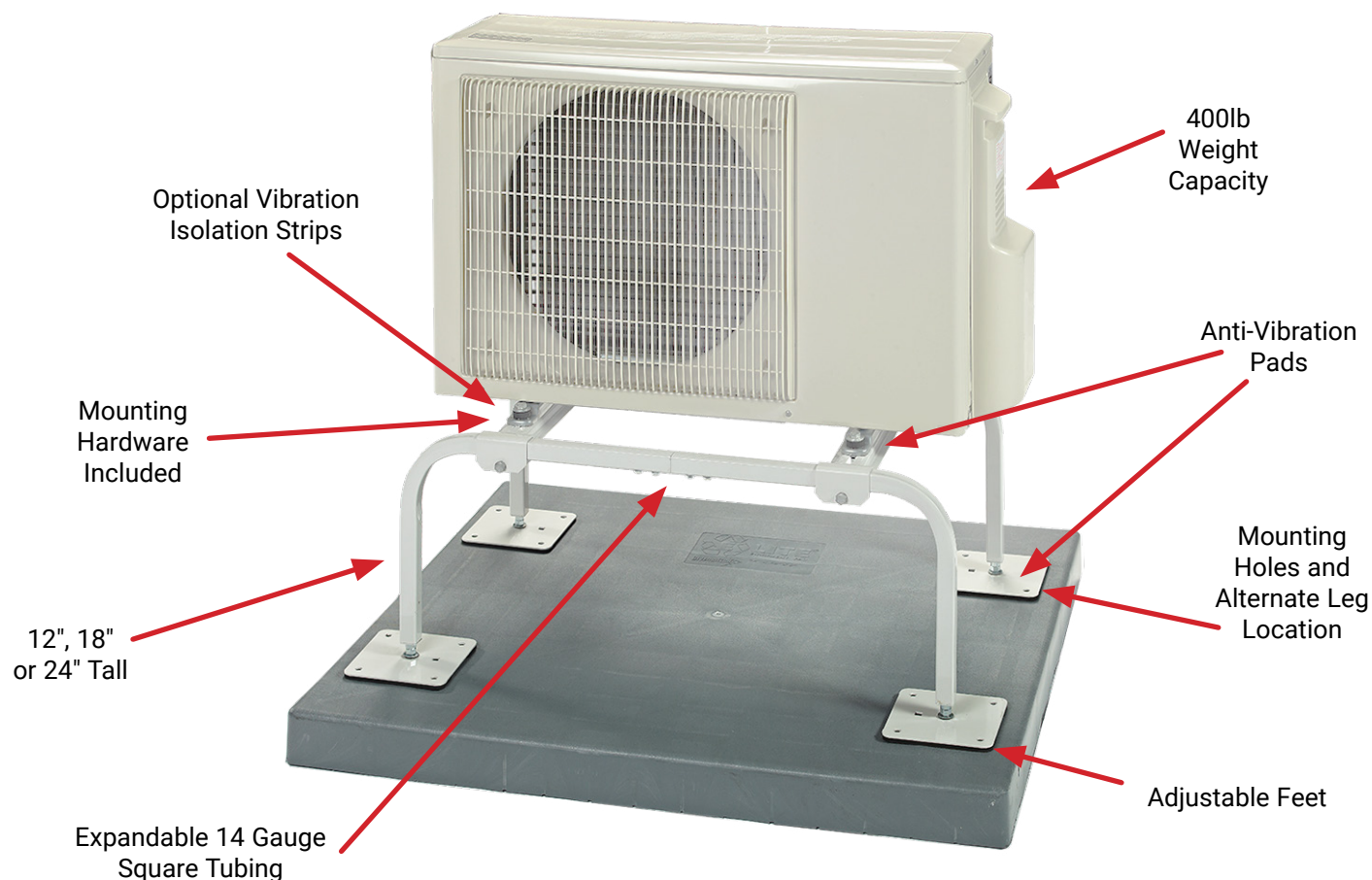
	BASIC Great Value	STANDARD Hurricane/ Seismic Code Compliant	PRO Ultimate Weather Resistance
MATERIAL	Powder-coated galvanized steel	Powder-coated steel	Powder-coated aluminum
STRENGTH	Heavy-duty steel construction	Heavy-duty steel construction	Lighter than steel with same holding capacity
CORROSION PROTECTION	Excellent corrosion protection	Excellent corrosion protection	Superior corrosion protection; ideal for coastal/harsh environments
APPLICATION OPTIONS	Single Fan	Single Fan Unit Dual Fan Unit Large Cabinet Units Horiz. Air Discharge Units Combo Unit Multi-Unit	Single Fan Unit Dual Fan Unit Large Cabinet Units

With the most robust offering of mini-split stands in the industry, we make it easy to choose the right one for the job, whether it's for a single residential mini-split install or a complex multi-unit commercial project.

MATERIAL	SINGLE FAN UNIT STANDS	DUAL FAN UNIT STANDS	DOUBLE STACK	LARGE CABINET STANDS	HORIZONTAL AIR DISCHARGE UNITS	COMBO UNIT STAND	MULTI-UNIT STAND
SINGLE FAN GALVANIZED STEEL	QSMS1206 QSMS1806						
STAINLESS STEEL	QSMS1201-SS QSMS1801-SS QSMS2401-SS	QSMS1202-SS					
POWDER- COATED ALUMINUM	QSMS1201-PAL QSMS1801-PAL QSMS2401-PAL	QSMS1202-PAL QSMS1802-PAL QSMS2402-PAL					
POWDER- COATED STEEL	QSMS1200 QSMS1201 QSMS1800 QSMS1801 QSMS1801-3 QSMS2400 QSMS2401	QSMS1202 QSMS1802 QSMS2402	QSMS1203 QSMS1203-N	QSMS1204 QSMS1804 QSMS2404	QSMS1205 QSMS1805 QSMS2405	QSMS4000-12 QSMS4000-18 QSMS4000-24	QSMS3001-12 QSMS3001-18 QSMS3001-24 QSMS3001-12EXT QSMS3001-18EXT QSMS3001-24EXT
UNPAINTED ALUMINUM	QSMS1201-AL QSMS1801-AL QSMS2401-AL	QSMS1202-AL QSMS1802-AL QSMS2402-AL					

Equipment Stand Mounted – Single Fan Units

QUICK-SLING®



QSMS1201

Quick-Sling® Mini-Split Stands

Our Quick-Sling® Mini-Split Stands provide a safe, stable platform to mount your unit on. It keeps unit elevated above lawn mowers, weed wackers, pets, snow, and flooding. The elevated height allows for ease of installation, maintenance and service.

Now available in Stainless Steel (-SS).

- Easier to install and maintain
- Flood and snow zones
- Keeps debris from coil

ITEM NO.	DESCRIPTION	UOM	OM
QSMS1200	12 in. High Mini-Split Stand "Thin", Holds up to 400 lbs.	EA	1
QSMS1201	12 in. High Mini-Split Stand "Wide", Holds up to 400 lbs.	EA	1
QSMS1201-SS	12 in. High Mini-Split Stand "Wide", Holds up to 400 lbs.	EA	1
QSMS1800	18 in. High Mini-Split Stand "Thin", Holds up to 400 lbs.	EA	1
QSMS1801	18 in. High Mini-Split Stand "Wide", Holds up to 400 lbs.	EA	1
QSMS1801-SS	18 in. High Mini-Split Stand "Wide", Holds up to 400 lbs.	EA	1
QSMS2401	24 in. High Mini-Split Stand "Wide", Holds up to 400 lbs.	EA	1
QSMS2401-SS	24 in. High Mini-Split Stand "Wide", Holds up to 400 lbs.	EA	1

Quick-Sling® Mini-Split Stands - Extra Wide

ITEM NO.	DESCRIPTION	UOM	OM
QSMS1204	12 in. High Large Mini-Split Stand "Extra Wide", Holds up to 400 lbs.	EA	1
QSMS1205	12 in. High Large Mini-Split Stand "Extra Wide", 3 Rails Holds up to 400 lbs.	EA	1
QSMS1804	18 in. High Large Mini-Split Stand "Extra Wide", Holds up to 400 lbs.	EA	1
QSMS1805	18 in. High Large Mini-Split Stand "Extra Wide", 3 Rails Holds up to 400 lbs.	EA	1
QSMS2404	24 in. High Large Mini-Split Stand "Extra Wide", Holds up to 400 lbs.	EA	1
QSMS2405	24 in. High Large Mini-Split Stand "Extra Wide", 3 Rails Holds up to 400 lbs.	EA	1



QSMS2404

Quick-Sling® Mini-Split Dual Fan Stands

Our Quick-Sling® Mini-Split Dual Fan Stands provide a safe, stable platform to mount your unit on. It keeps unit elevated above lawn mowers, weed wackers, pets, snow, and flooding. The elevated height allows for ease of installation, maintenance and service.

ITEM NO.	DESCRIPTION	UOM	OM
QSMS1202	12 in. Dual Fan Mini-Split Stand, Holds up to 400 lbs.	EA	1
QSMS1802	18 in. Dual Fan Mini-Split Stand, Holds up to 400 lbs.	EA	1
QSMS2402	24 in. Dual Fan Mini-Split Stand, Holds up to 400 lbs.	EA	1



QSMS1202

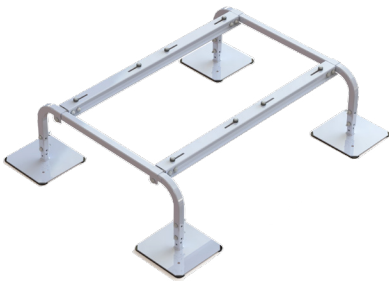
Quick-Sling® Mini-Split Double Stack Stand

Our Quick-Sling® Mini-Split Double Stack Stands provide a safe, stable platform to mount your unit on. It keeps the unit elevated above lawn mowers, weed wackers, pets, snow, and flooding. The elevated height allows for ease of installation, maintenance and service.

ITEM NO.	DESCRIPTION	UOM	OM
QSMS1203	12 in. Mini-Split Double Stack Stand, Holds up to 400 lb Bottom / 200 lb Top	EA	1
QSMS1203-N	12 in. High Mini-Split Double Stack, "Narrow" Holds up to 400 lb Bottom / 200 lb Top	EA	1



QSMS1203



QSMS4000-12

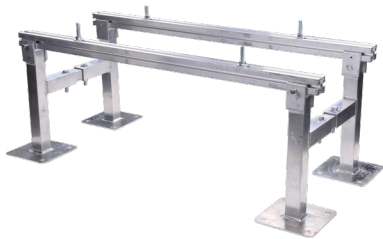
Combo Mini-Split Stands

The combo unit stand accommodates two single or double outdoor mini-splits. Ideal for rooftop installations. Made from heavy duty 1-1/2" square tubing and large 12" x 12" square feet.

ITEM NO.	DESCRIPTION	UOM	OM
QSMS4000-12	Combo Mini-Split Stand - 12in	EA	1
QSMS4000-18	Combo Mini-Split Stand - 18in	EA	1
QSMS4000-24	Combo Mini-Split Stand - 24in	EA	1

Aluminum Equipment Stands

The Aluminum Equipment Stands accommodate one or more outdoor mini-split condensing units. Mounting rails are adjustable and the stands use captive fasteners for quick and secure equipment mounting. Extensions can be added to a base to mount multiple units on a single stand.



QSTD1403-AL

ITEM NO.	DESCRIPTION	EXTENSION	UOM	OM
QSTD1403-AL	14 in. Mini-Split Outdoor Equipment	QSTD1403-ALX	EA	1
QSTD1404-AL	Traditional Split Systems or 2 Fan Mini-Split	QSTD1404-ALX	EA	1
QSTD2403-AL	24 in. Mini-Split Outdoor Equipment	QSTD2403-ALX	EA	1
QSTD2404-AL	Traditional Split Systems or 2 Fan Mini-Split	QSTD2404-ALX	EA	1



QSMSFT12

Feet for Mini-Split QSMS Stands - 12 in. x 12 in.

The Quick-Sling® QSMSFT12 is a 4 pack of 12 in. x 12 in. feet for QSMS stands. These would typically be used on rooftop applications where larger feet are needed to replace the QSMS existing 6 in. x 6 in. feet.

ITEM	DESCRIPTION	UOM	OM
QSMSFT12	12in x 12in Feet for Mini-Split Stands - Qty 4	PK	1

Vibration Isolation Strips

These specially engineered strips are made of high-density elastomeric-coated, molded and pre-compressed fiberglass.

ITEM	DESCRIPTION	UOM	OM	FOR USE WITH
QSAC5100	Vibration Isolation Kit Narrow MS	EA	1	QSMS1200 QSMS1800 QSMS2400
QSAC5101	Vibration Isolation Kit Wide MS	EA	1	QSMS1201 QSMS1801 QSMS2401
QSAC5102	Vibration Isolation Kit Double Fan Stand	EA	1	QSMS1202 QSMS1802 QSMS2402
QSAC5104	Vibration Isolation Kit	EA	1	QSMS1204 QSMS1804 QSMS2404
QSAC5105	Vibration Isolation Kit for Large *05 Stands	EA	1	QSMS1205 QSMS1805 QSMS2405
QSAC5200	Vibration Isolation Kit for 48 in. SS	EA	1	QSSB48-** QSSX48-**
QSAC5201	Vibration Isolation Kit for 62 in. SS	EA	1	QSSB62-** QSSX62-**
QSAC5202	Vibration Isolation Kit for 74 in. SS	EA	1	QSSB74-** QSSX74-**



QSAC5101

Anti-Vibration Feet

Set of 4 each 6 in. x 6 in. anti-vibration feet for QSMS and QSTD stands. These anti-vibration feet provide 3 times more deflection than standard AV pads and can be used on any application where additional vibration isolation or noise reduction is needed.

ITEM	DESCRIPTION	UOM	OM
QSAC3000	Anti-Vibration Feet	SET	1



QSAC3000



QSPR1000

Mini-Split Stands - Pitched Roof Stand

The Quick-Sling® QSPR1000 is a pitched roof stand/bracket that provides a strong & stable platform to mount an outdoor mini-split unit to a sloped roof. The pitched roof bracket adjusts from 9 degrees to 45 degrees to match the pitch of the roof. This stand is 34.6 in. wide and the support arms are adjustable from 3 in. to 29 in. width. It has a load capacity of 300 lbs.

ITEM	DESCRIPTION	UOM	OM
QSPR1000	Mini-Split Stand for Pitched Roofs	EA	1

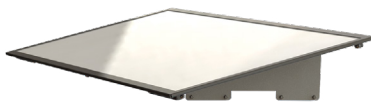


QSRB1000

Mini-Split Stands - Roof Bracket

The Quick-Sling® Roof Bracket QSRB1000 mounts to a QSWB3000 or the QSMS1200,1201,1202,1800,1801,1802, 2400, 2401, 2401. The Roof Bracket protects the equipment from snow and freezing rain and is designed to ensure proper airflow around the equipment. It is constructed of 14 ga. powder coated steel and the roof shield is made from durable, UV protected twin wall plastic.

ITEM	DESCRIPTION	UOM	OM
QSRB1000	Roof Bracket for Mini-Split Stands	EA	1



QSW1000

Quick-Sling WeatherShield® Roof Cover

The Quick-Sling WeatherShield® QSW1000 shields and protects outdoor ductless condensing units from weather damage. The QSW1000 fits all popular mini split models, it is adjustable to fit units 31.5 in. to 41.5 in. length and 6 in. to 14 in. wide. Quick-Sling WeatherShield® mounts directly to the mini-split and fits most sizes of equipment. Roof material is UV protected, mounting hardware is included.

ITEM	DESCRIPTION	UOM	OM
QSW1000	Roof Cover for Mini-Split Units (31.5-41.5 in. x 6-14 in.)	EA	1



QSCH1000

Ductless Cassette Hangers

The Ductless Cassette Hangers are an innovative bracket design that is made of lightweight aluminum to provide quick and easy installation of ductless cassettes. Only two SKUs are compatible with most of the ductless cassettes on the market today. The built-in adjustability allows the alignment of the unit after it has been hung.

ITEM NO.	DESCRIPTION	UOM	OM
QSCH1000	Ductless Cassette Hanger - Small, Holds up to 200 lbs.	EA	1
QSCH2000	Ductless Cassette Hanger - Large, Holds up to 200 lbs.	EA	1

Base Pads

The DiversiTech® 230-BP17W base pad is a white mounting base used when a condenser must be bolted to the base. The base is used mainly on rooftop and ground applications to raise unit 3 in. above surface. Used primarily on ductless condensers, the sliding rail design allows for quick and easy attachment to equipment mounting feet.

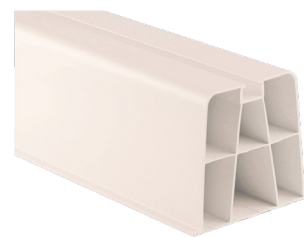


230-BP17W

ITEM	DESCRIPTION	UOM	OM
230-BP17W	17 in. Base Pad (White)	PK	10

Hef-T-Block™

Used as mounting bases when condensing units must be bolted down. Available in three lengths. Furnished complete with end caps and mounting bolts. Maximum load capacity is 440 pounds per mounting block. Installation temperature range from -4°F (-20°C) to 140°F (60°C). Hef-T-Blocks fit all mini-split condensing units with a unique sliding rail feature.



230-MB17W

ITEM	DESCRIPTION	UOM	OM
230-MB14W	14" Hef-T-Block™, White w/End Caps, Pack of 2	PK	1
230-MB17W	17" Hef-T-Block™, White w/End Caps, Pack of 2	PK	1
230-MB36W	36" Hef-T-Block™, White w/End Caps, Pack of 2	PK	1
230-MBCW	Hef-T-Block™ Replacement End Cap, White, Pack of 25	PK	1

Hef-T-Foot™ Mini-Split Installation Kit

Hef-T-Foot™ blocks designed to mount to mini-split outdoor units. High quality heavy-duty compression molded rubber provides solid base and absorbs vibration and sound. Includes mounting hardware.



FF-600-S-KIT

ITEM	DESCRIPTION	UOM	OM
FF-450-S-KIT	Pair of Hef-T-Foot™ 17.7 in. Mini-Split Mounting Blocks including strut inserts and hardware.	EA	1
FF-600-S-KIT	Pair of Hef-T-Foot™ 23.6 in. Mini-Split Mounting Blocks including strut inserts and hardware.	EA	1
FF-1000-S-KIT	Pair of Hef-T-Foot™ 39.4 in. Mini-Split Mounting Blocks including strut inserts and hardware.	EA	1

**QUIETMINI-M**

Undermount Condensate Pump

The QUIETMINI-M Undermount Condensate Pump installs under wall-mounted air conditioners and provides an ultra-quiet running utilizing ultra-quiet diaphragm technology (UQT) within a sleek design. With easy installation and hassle-free maintenance, these quiet pumps are perfect for locations sensitive to noise, like hotels, theaters and meeting rooms. Universal voltage - 115 - 230V 50/60Hz.

**QUIETMINI-I**

Internal Condensate Pump

QUIETMINI-I is a compact ultra quiet piston pump (19 dBA) designed for internal installation in minisplits. With a built-in safety overflow switch, built-in check valve to prevent backflow and anti-vibration mounts, these pumps offer easy installation and low maintenance. Universal voltage - 115 - 230V 50/60Hz.

ITEM	DESCRIPTION	UOM	OM
QUIETMINI-M	Condensate Pump Ductless	EA	10
QUIETMINI-I	Condensate Pump Ductless	EA	10

**CVMINI**

ClearVue Mini Ductless System Pump

The Asurity® CVMINI Mini-Split Condensate Pump specifically designed for minisplit systems, is super quiet and compact. Flexible installation options, Floatless Sensor™ and Variable Speed and Lift technology provides great performance in a small package.

ITEM	DESCRIPTION	UOM	OM
CVMINI	ClearVue Mini - Ductless System Pump	EA	6

**230-DPPL****230-DPPM**

Condensate Drain Pans

When a mini-split system operates in heat pump mode, dripping condensation from the outdoor coil can create a slip or ice hazard. Condensate drain pans bolt onto the condenser mounting brackets, controlling the condensate flow while the drain line is plumbed nearby. Furnished complete with mounting hardware and drain pan outlet.

ITEM	DESCRIPTION	UOM	OM
230-DPPL	Poly Condensate Drain Pan (Large)	EA	1
230-DPPM	Poly Condensate Drain Pan (Medium)	EA	1

Ductless Smooth Drain Line

230-DL16-S is a unique non-kinking drain line for mini-split units, designed specifically with a smooth internal surface. The 16mm / 5/8 in. Smooth Drain Line resists blockages, improving condensate flow, within mini-split installations. The non-insulated drain hose is available in 98 feet.

ITEM	DESCRIPTION	UOM	OM
230-DL16-S	16mm / 5/8 in. Smooth Drain Line	EA	1



230-DL16-S

Mini-Split Condensate Drain Line

A unique drain line for mini-split units. This large diameter drain line is typical for mini-split installations. Available in 160 feet or 20 feet lengths with cut marks every 3.28 feet. Accommodates 5/8" and 3/4" connections.

ITEM	DESCRIPTION	UOM	OM
230-DL16	Mini-Split Drain Line, 5/8 in. ID, 160 ft.	EA	1
230-DL16-20	Mini-Split Drain Line, 5/8 in. ID, 20 ft.	EA	1



230-DL16

Mini-Split Drain Adapters

Mini-Split fan units — either ceiling cassettes or wall cassettes — typically have a unique, stepped design drain line fitting. These adapters convert this metric fitting to standard drain line tubing sizes.

ITEM	DESCRIPTION	UOM	OM
230-DLF16	16mm Mini-Split Drain Line Adapter	EA	1
230-DLF18	18mm Mini-Split Drain Line Adapter	EA	1
230-DLF20	20mm Mini-Split Drain Line Adapter	EA	1
230-DLF25	25mm Mini-Split Drain Line Adapter	EA	1
230-DLF32	32mm Mini-Split Drain Line Adapter	EA	1
230-DLFY	Mini-Split Drain Line Y	EA	1



230-DLF16



230-DLFY

Asurity® Pro-Treat® Condensate Drain Pan Treatment

Asurity® PROTREAT-217 Condensate Drain Pan Treatment controls odors and eliminates drain pan overflows that cause water damage. 200 economy tablet jar.

(Dosage: 3 tablets per 3 tons per month).

ITEM	DESCRIPTION	UOM	OM
PROTREAT-217	Pro-Treat® 217 Economy Tablets	EA	24



PROTREAT-217

SpeediChannel®



SpeediChannel® is an innovative channel system used to cover air conditioning Linesets. The two-part system has a base and a cover. The base is fastened to a wall or ceiling, then a clever little plastic clip (SpeediClip®) snaps into a channel already molded into the base. The cover then simply snaps on top of the base.

The SpeediChannel® system is available in three widths – 3", 4", and 6". Each piece of SpeediChannel® is 6-1/2 feet long. A complete line of couplings, elbows, and tees are available for the SpeediChannel® system.

Manufactured from rigid PVC, the SpeediChannel® system is a natural color that is a very close match to the typical mini split condensing unit case. The SpeediChannel® system can be painted as desired to match any wall color. The PVC used in the SpeediChannel® system is resistant to UV light, and is UL rated.



230-IKC3

SpeediChannel® Installation Kits

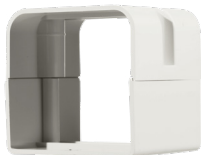
The SpeediChannel® installation kits provides a simple mix of the basic fittings and 3 – 48" pieces of channel used in a typical SpeediChannel installation job. Includes SpeediClips and cable ties.



230-D3A

SpeediChannel® Lineset Covers

The DiversiTech SpeediChannel® is available in three widths, all in 6-1/2 feet lengths. Includes a pack of SpeediClips®.



230-CP3

SpeediChannel® Union Coupling

Used for joining two pieces of SpeediChannel® – each cover being the same size. Each coupling is individually packed, and is furnished complete with stainless steel screws.



230-AFB3

SpeediChannel® Adjustable Flat Bend

Adjustable flat bends flex from 45 to 90 degrees and make it easy to route the SpeediChannel® around an obstacle. Each adjustable bend is individually packed and includes stainless steel screws.



230-DC3

SpeediChannel® Caps

The SpeediChannel® natural color cap by DiversiTech® is used to cap the end of a channel. It's made of UV resistant PVC material to resist the elements and provide lasting protection.

SpeediChannel® Duct End

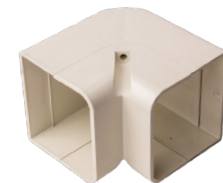
The duct end is used to terminate a run of SpeediChannel® to a small opening – just large enough for the lineset and condensate drain line to pass through. Gives a neat/clean installation. SpeediChannel® 90° Inside Elbow



230-DE3

SpeediChannel® 90° Inside Elbow

90° inside elbows are used to route the SpeediChannel® around an inside corner. Each elbow is individually packed, and is furnished complete with stainless steel screws.



230-EB3

SpeediChannel® 45° & 90° Flat Bend

45° & 90° flat bends are used to route the SpeediChannel® around an obstacle. Each bend is individually packed, and is furnished complete with stainless steel screws.



230-FB453B

SpeediChannel® Flex Hose Kit

A flexible hose kit of SpeediChannel® that protects the lineset from the condensing unit to the wall. Also provides a quick easy connection between two lengths of channel over or around obstacles. The kit comes with everything needed for a clean professional installation.



230-FH3W-KIT

SpeediChannel® Flex Joint

An accordion style piece of SpeediChannel®, the flex joint can be extremely flexible routing a SpeediChannel® system around virtually any type of obstacle. Each joint is 20" long and can be combined together for longer flex runs. Unlike competitor systems, the DiversiTech flex joint does NOT require the use of a union coupling. The DiversiTech flex joint slides tightly inside the SpeediChannel® system.



230-FJ3

SpeediChannel® Duct End

The duct end is used to terminate a run of SpeediChannel® to a small opening – just large enough for the lineset and condensate drain line to pass through. Gives a neat/clean installation.



230-FHDC3

SpeediChannel® 90° Outside Elbow

90° inside elbows are used to route the SpeediChannel® around an inside corner. Each elbow is individually packed, and is furnished complete with stainless steel screws.



230-EIN3



230-CUTTER

SpeediChannel® Line Set Cover Cutter

The 230-CUTTER is designed to easily cut lineset covers that protect linesets and insulations in HVAC applications. The 230-CUTTER has a ratcheting cutting blade that makes cutting lineset covers easy and clean. It has cutting capacity for various duct sizes, ranging from 1.38" x 1.18" up to 3.54" x 2.55".



230-DCLIP

SpeediClip™

Holds the lineset securely in the channel using cable ties. The clip slides into place on a railing molding into the inside of the channel allowing for single person installation.



230-LFB3

SpeediChannel® 90° Long Radius Bend

90° long radius flat bends are used to route the SpeediChannel® around an obstacle. The long radius of the elbow allows a gentle bending radius on the copper lineset. Each elbow is individually packed, and is furnished complete with stainless steel screws.



230-WC3

SpeediChannel® Wall Penetration Covers

Wall penetration covers are used to transition from the SpeediChannel® system to a through wall penetration. DiversiTech's wall covers are designed to allow for easy installation - even after the lineset has been installed. A unique hooking and fastening arrangement allows for quick and easy installation. Each wall cover is individually packed, and is furnished complete with stainless steel screws to attach the wall cover to the base. Three screws (supplied by others) are needed to fasten the wall cover to whatever type of wall construction the system is being installed on.



230-FR3

SpeediChannel® Flat Wall Escutcheon

The SpeediChannel® natural color flat wall escutcheon is typically used to cover a rough opening in a soffit, wall, or ceiling penetration. One side of the escutcheon is flat to allow for a channel run going along a wall and penetrating through an adjacent wall or ceiling.



230-EIN3

SpeediChannel® Wall Escutcheon

The SpeediChannel® natural color wall escutcheon is used to cover a rough opening in a wall or ceiling penetration. The hole in the escutcheon is centered to allow for a free standing channel to penetrate through a wall or ceiling. The two-part wall escutcheon easily snaps onto the channel.

SpeediChannel® Reducer Coupling

The SpeediChannel® reducer coupling is used for joining two different pieces of channel. Each coupling is individually packed and includes stainless steel screws.



230-TC34

SpeediChannel® T-Joint

The SpeediChannel® natural color t-joint is used for creating a tee connection between three pieces of equal sized channel. The tee can be combined with the reducing coupling to join channel of different sizes. Each tee is individually packed and includes stainless steel screws.



230-TJ4

SpeediChannel® Soffit Fitting

The SpeediChannel® natural color soffit fitting is ideal for outdoor applications where the lineset runs up an exterior wall and enters the house vertically through the soffit. Its large, flat surface area easily covers the rough opening cut in the soffit. The two-part soffit fitting easily snaps onto the channel for a clean installation.



230-SF3

SpeediChannel® Wall Penetration

The SpeediChannel® 230-WS3 2-7/8 in. natural color wall sleeve is used to transition from the channel through a wall penetration. The wall sleeve creates a clean hole through the wall and the lineset is covered by the wall cover.

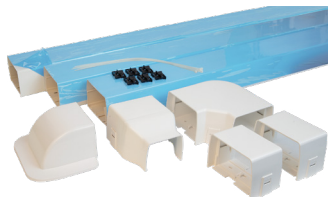


230-WS3



EasyGuard®

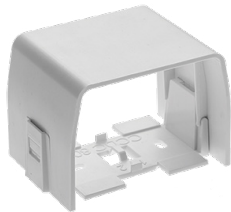
The EasyGuard® Lineset Cover system is designed to protect linesets and insulation and meet local code requirements. It is quick and simple to install and ideal for both new and retro-fit installations. Available in 3" and 4" sizes. System works with SpeediClip™ (230-DCLIP) to keep linesets in place. Paintable.



EG-IKC4W

EasyGuard® Installation Kits

EasyGuard Installation Kits provide necessary fittings for a typical install. Available in white, the 3 and 4 inch kits include 3 4 ft. channels, 2 union couplings, 1 wall penetration cover, 1 duct end, 1 90 deg elbow, and packs of SpeediClips™ and cable ties.



EG-CP3W

EasyGuard® Union Coupling

The EasyGuard® white coupling is used for joining two pieces of channel. Each coupling is individually packed and includes stainless steel screws.



EG-D3W

EasyGuard® Lineset Covers

The EasyGuard® white lineset cover channel is 6-1/2 ft. long and works with SpeediClip™. It's made of UV resistant PVC material to resist the elements and provide lasting protection. Includes protective film cover.



EG-DE3W

EasyGuard® Duct End

The EasyGuard® white duct end is used to terminate a run of channel to a small opening large enough for the lineset and condensate drain line to pass through.



EG-EIN3W

EasyGuard® 90° Outside Elbow

90° outside elbows are used to route the EasyGuard® around an outside corner. Each elbow is individually packed, and is furnished complete with stainless steel screws.

EasyGuard® 90° Inside Elbow

90° inside elbows are used to route the EasyGuard® around an inside corner. Each elbow is individually packed, and is furnished complete with stainless steel screws.



EG-EB3W

EasyGuard® Flat Bend

The EasyGuard® white 90° flat bend is used to route linesets around obstacles. Each bend is individually packed and includes stainless steel screws.



EG-FB3W

Easy Guard® Reducer Coupling

The EasyGuard® EG-TC34W 3 in. white reducer coupling is used for joining two different sized pieces of channel. Each coupling is individually packed and includes stainless steel screws.



EG-TC34W

EasyGuard® T-Joint

The EasyGuard® white T-joint is used for creating a tee connection between three pieces of channel with all covers being the same size. The tee can be combined with the reducing coupling to join channel of different sizes. Each tee is individually packed and includes stainless steel screws.



EG-TJ4W

EasyGuard® Wall Covers

The EasyGuard® white wall cover is used to transition through a wall penetration. The wall sleeve creates a clean hole through the wall and the lineset is covered by the wall cover. Each wall cover is individually packed and includes stainless steel screws to attach the wall cover to the base.



EG-WC3W

EasyGuard® Flex Hose Kit

The EasyGuard® EG-FH4W white flex hose connection kit protects the lineset from the condensing unit to the wall. It also provides a quick connection between two lengths of channel over or around obstacles. The kit includes everything needed for a clean and professional installation.



EG-FH4W

EasyGuard® Soffit Fitting

The EasyGuard® white soffit fitting is ideal for outdoor applications where the lineset runs up an exterior wall and enters the house vertically through the soffit. The large, flat surface area covers the rough opening cut in the soffit. It easily snaps onto the channel for a clean installation.



EG-SF3W



D40880250B3B6

Mini-Split Linesets

DiversiTech® Linesets are individually packaged in sturdy corrugated cardboard, designed and tested for individual parcel shipment. Linesets are designed for air conditioning and refrigeration systems.



D610K0350B3B6

Mini-Split Linesets with Tear Resistant Insulation

The DiversiTech® tear resistant Mini-Split Linesets are designed for mini-split air conditioning systems. A durable polymeric jacket minimizes installation damage and easily conforms to bends. An expanded closed-cell structure and unique formulation resists moisture vapor intrusion and UV damage.

COMPONENTS & CONSUMABLES



RSC-RED-02-E



UPDATED
4-PRONG KEY
FITS MOST
MANUFACTURERS

Sentry™ Refrigerant Locking Caps

The Sentry™ Refrigerant Locking Caps are a quick and easy way to comply with the IRC and IMC codes requirement that all outdoor access ports on A/C and refrigerant equipment have to be tamper resistant. This cap is anodized in red color for easy identification of R-410 refrigerant. It is designed for 5/16" access ports typically used on mini-splits and European styles of A/C systems. An O-ring seal is also pre-installed to prevent leaks.

ITEM NO.	DESCRIPTION	UOM	OM
RSC-RED-02-E	5/16 in., Red, 2 Pack	PK	1
RSC-RED-04K-E	5/16 in., Red, 4 Pack w/Universal Key	PK	1
RSC-RED-10-E	5/16 in., Red, 10 Pack	PK	1
RSC-RED-50K-E	5/16 in., Red, 50 Pack w/2 Universal Keys	PK	1

Brass Adapters

The MSA-31F brass adaptor is used on mini-split systems that have a 5/16" fitting on the service valve. This adapter includes: valve core, cap with O-ring, 1/4" male flare X 5/16" UNF adapter, 3mil bag. Solid brass construction; 45 degree bend.



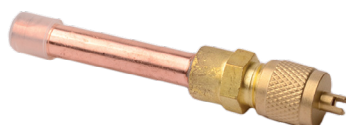
MSA-31F



ITEM NO.	DESCRIPTION	UOM	OM
MSA-31F	1/4 in. Male Flare with 5/16 in. Female UNF	EA	1

Access Fittings

The DiversiTech® VAX-5 5/16 in. OD extended copper tube is a convenient low-cost port for refrigeration servicing. It can be installed in any position on either high or low side for charging, purging, quick testing, or pressure checking. DiversiTech's access fittings have 1/4 in. SAE male flare access ports and include a quick seal cap and a stainless and brass special refrigerant valve core.



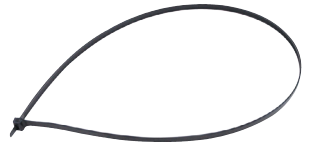
VAX-5



ITEM	DESCRIPTION	UOM	OM
VAX-5	AF, 5/16ODx1/4ID, Pk of 3	PK	1
VAX-5B	AF, Extended CPR. Tube, 5/16 in.	EA	100
VTS-46	AF, S/T, 1/4 in. ODS, Pk of 3	PK	1
VTS-56	AF, S/T, 5/16 in. OD, Pk of 3	PK	1

Heavy Duty Nylon Cable Ties

Black ties are weather and UV resistant. Items in this section are Underwriters' Laboratories listed or recognized under the prime manufacturer's name.



6266BLX

ITEM	DESCRIPTION	UOM	OM
6265BLX	Nylon, Heavy-Duty, pack of 50, Length - 14 in., Black, Tensile strength - 175 lb.	PK	1
6265BCX	Nylon, Heavy-Duty, pack of 100, Length - 14 in., Black, Tensile strength - 175 lb.	PK	1
6266BLX	Nylon, Heavy-Duty, pack of 50, Length - 36 in., Black, Tensile strength - 175 lb.	PK	1

Nylon Cable Ties with Mounting Hole

Black ties are weather and UV resistant. Items in this section are Underwriters' Laboratories listed or recognized under the prime manufacturer's name.



60264CX



60264BCX

ITEM	DESCRIPTION	UOM	OM
60264CX	Tie with #8 mtg hole, pack of 100 - 6 in., Natural, 30 lb.	PK	1
6264CX	Tie with #10 mtg hole, pack of 100 - 7 in., Natural, 50 lb.	PK	1
6264BCX	Tie with #10 mtg hole, pack of 100 - 7 in., Black, 50 lb.	PK	1
60263CX	Tie with #10 mtg hole, pack of 100 - 11 in., Natural, 50 lb.	PK	1
60263BLX	Tie with #10 mtg hole, pack of 50 - 11 in., Black, 50 lb.	PK	1
60263BCX	Tie with #10 mtg hole, pack of 100 - 11in., Black, 50 lb.	PK	1

6262LX

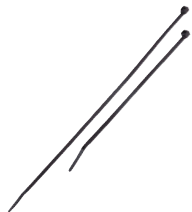


6262BLX

Nylon Cable Ties

Ties are weather and UV resistant. Items in this section are Underwriters' Laboratories listed or recognized under the prime manufacturer's name.

ITEM	DESCRIPTION	UOM	OM
6267MX	Nylon Cable Ties, pack of 1000 - 4in., Natural, 18 lb.	PK	1
6268BMX	Nylon Cable Ties, pack of 1000 - 6in., Black, 30 lb.	PK	1
6262LX	Nylon Cable Ties, pack of 50 - 7 1/2in., Natural, 50 lb.	PK	1
6262CX	Nylon Cable Ties, pack of 100 - 7 1/2in., Natural, 50 lb.	PK	1
6262BCX	Nylon Cable Ties, pack of 100 - 7 1/2in., Black, 50 lb.	PK	1
6262BMX	Nylon Cable Ties, pack of 1000 - 7 1/2in., Black, 50 lb.	PK	1
6263CX	Nylon Cable Ties, pack of 100 - 11in., Natural, 50 lb.	PK	1
6263DX	Nylon Cable Ties, pack of 500 - 11in., Natural, 50 lb.	PK	1
6263BLX	Nylon Cable Ties, pack of 50 - 11in., Black, 50 lb.	PK	1
6263BCX	Nylon Cable Ties, pack of 100 - 11in., Black, 50 lb.	PK	1
6263BDX	Nylon Cable Ties, pack of 500 - 11in., Black, 50 lb.	PK	1
60265LX	Nylon Cable Ties, pack of 50 - 14in., Natural, 50 lb.	PK	1
60265BLX	Nylon Cable Ties, pack of 50 - 14in., Black, 50 lb.	PK	1



62000AX

Black Nylon Cable Tie Assortment

Black ties are weather and UV resistant. Items in this section are Underwriters' Laboratories listed or recognized under the prime manufacturer's name.

ITEM	DESCRIPTION	UOM	OM
62000AX	Assortment, Black, 7-1/2 in. & 11 in., 50 lb.	PK	1

BBJ Ductless Mini-Split First Aid Kit

The complete BBJ Ductless Mini-Split First Aid Kit contains everything you need to clean and sanitize a mini split system. Each kit contains Micro Coil cleaner, an easy to use non-caustic coil cleaner, and the EPA registered Mold Control for HVAC Systems and Air Ducts.



700-01

ITEM	DESCRIPTION	UOM	OM
700-01	Mini-Split First Aid Kit (505-01, 490-01)	EA	6

ITEM	DESCRIPTION	UOM	OM
505-01	Micro Coil Clean - 17 oz. Aerosol	EA	6
510-01	Micro Coil Clean - 64 oz. Bottle	EA	4

BBJ Mold Control for HVAC Systems and Air Ducts Concentrate

This EPA Registered product protects against mold and deodorizes all HVAC components. Use on ductwork, coils, drain pans, air handling units, package units, and humidifiers and dehumidifiers. Also helps remove and stop musty smells from odor causing bacterial growth.

ITEM	DESCRIPTION	UOM	OM
490-01	Mold Control HVAC/Ducts Spray - 14 oz. Aerosol	EA	6



490-01

BBJ MMR II Mold & Mildew Remover/Disinfectant

Meets EPA Emerging Pathogen Guidelines. Powerful disinfectant and mold remover. MMR-II is a commercial-grade non-porous surface cleaner and broad-spectrum disinfectant combined in one powerful product. Clean and sanitize in one step. Disinfects, and removes unsightly mold streaks on walls, ceilings, diffusers, and other hard surfaces, and kills mold in HVAC systems.

ITEM	DESCRIPTION	UOM	OM
620-01	Disinfectant, 32 oz. Spray Bottle	EA	12



620-01

*MasterCare***Triple-D® Universal Coil Cleaner**

MasterCare® Triple-D® is the ultimate universal coil cleaner that can be used on condensers, evaporators, microchannels, roof-top units, and mini-split applications. The triple active synergistic highly effective solution is formulated to remove a broad range of soils while degreasing and deodorizing. It is ideal for cleaning most metals including aluminum and copper while extending equipment life and diminishing the potential for refrigerant leaks. Using 75% less than comparable products, it reduces the amount of solution needed to clean. Triple-D® is biodegradable, NSF approved and available in seven different packaging configurations.

ALUMINUM,
MICROCHANNEL
& MINI-SPLIT
FRIENDLY!

**TRIPLE-D****TRIPLE-D-1SHOT**

ITEM	DESCRIPTION	UOM	OM
TRIPLE-D	Triple-D® - 1 Gallon Concentrate	EA	4
TRIPLE-D-4X	Triple-D® - 4X Concentrate	EA	12
TRIPLE-D-1SHOT	Triple-D® - 4 oz. Concentrate	EA	14
TRIPLE-D-AER	Triple-D® - 19 oz. Aerosol Can	EA	12
TRIPLE-D-AER-6	Triple-D® - 19 oz. Aerosol Can/6 Pack	EA	6
TRIPLE-D-RTU	Triple-D® - 1 Quart Pre-mixed Sprayer	EA	12

**972KIT****Leak Sealant With UV Dye Kit**

MasterCare® 972KIT HVAC/R Leak Sealant with UV Dye Kit is a 3-in-1 solution that detects, stops, and prevents future leaks. Fast and easy to install; requires no pump down or recovery. Compatible with all oils and refrigerants and ideal for all systems including microchannel, heat pump and geothermal. Kit includes hose and sealant. Available in sizes to meet the requirements of small to large systems.

ITEM	DESCRIPTION	UOM	OM
972KIT	1 Can with Hose with Self-Piercing Valve	EA	12

**944KIT****Leak Sealant Kit**

MasterCare® 944KIT HVAC/R Leak Sealant Kit eliminates moisture, stops leaks, and prevents future leaks. Fast and easy to install; requires no pump down or recovery. Compatible with all oils and refrigerants and ideal for all systems including microchannel, heat pump and geothermal. Kit includes hose and sealant. Available in sizes to meet the requirements of small to large systems.

ITEM	DESCRIPTION	UOM	OM
944KIT	1 Can with Hose with Self-Piercing Valve	EA	12

Molded Case Switch Disconnect

The DDS-60SW Molded Case Switch Disconnect is rugged and easy to use like an ordinary light switch. It eliminates the pullout handle used in traditional AC disconnects and is easy to install. It is UL listed and rated for indoor and outdoor applications with NEMA 3R rating.

ITEM	DESCRIPTION	UOM	OM
DDS-60SW	Molded Case Switch Disconnect, 60A 240 VAC	EA	10



DDS-60SW

Surge Protected Disconnect

The DiversiTech® DDS-60U-SURGE Non-fused 60 Amp surge protected disconnect is a complete assembly that allows for a quick and easy solution for HVACR equipment protection. The integrated Ditek DTK-120/240CM+ surge protector is mounted and wired to the disconnect out of the box. It provides an automatically resetting 50000A surge current rating and a highly visible diagnostic LED.

ITEM	DESCRIPTION	UOM	OM
DDS-60U-SURGE	Surge Protected Disconnect, 60A	EA	6

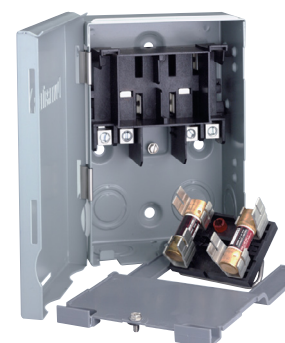


DDS-60U-SURGE

Pull-Out Switch Disconnect

Fused model designed with fuses in pull out handle for easy replacement. The line, load, and ground terminals are aligned for ease of wiring. The side open door opens more than 180 degrees for maximum access and has a full dead front. The fused models have indicator lights for blown fuses. This is rain tight and sleet resistant.

ITEM	DESCRIPTION	UOM	OM
DDS-30	Fusible Disconnect Switch, 30A	EA	10
DDS-60	Fusible Disconnect Switch, 60A	EA	10
DDS-60U	Non-Fusible Disconnect Switch, 60A	EA	10



DDS-30

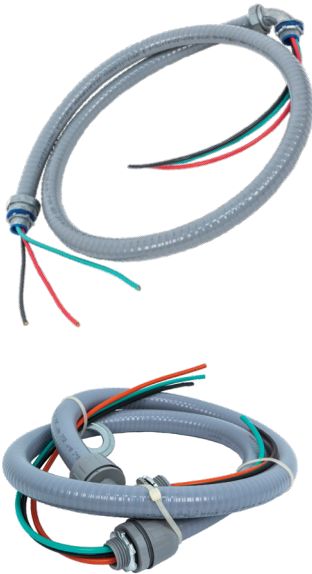
Top Opening Metallic Disconnects

The DiversiTech® top opening metallic disconnects are designed to stop power going to an air conditioner unit. These disconnects are designed with heavy gauge steel, a full dead front, and a non-fused pullout handle for safe working conditions.

ITEM	DESCRIPTION	UOM	OM
PD30F	Fused, 30A	EA	6
PD60F	Fused, 60A	EA	6
PD60NF	Non-Fused, 60A	EA	6



PD30F



Whips (Non-Metallic and Metallic)

Commonly used for connecting air conditioners, pumps, motors, compressors, swimming pool equipment and similar equipment.

Metallic

ITEM	DESCRIPTION	UOM	OM
6-12-4	1/2" x 4' #10 THHN Wire - Metallic Connectors	EA	6
6-12-6	1/2" x 6' #10 THHN Wire - Metallic Connectors	EA	6
6-34-4	3/4" x 4' #8 THHN Wire - Metallic Connectors	EA	6
6-34-6	3/4" x 6' #8 THHN Wire - Metallic Connectors	EA	6
6-34-8	3/4" x 8' #8 THHN Wire - Metallic Connectors	EA	3

Non-Metallic

ITEM	DESCRIPTION	UOM	OM
6-12-4NM	1/2" x 4' #10 THHN Wire - Non-Metallic Connectors	EA	6
6-12-6NM	1/2" x 6' #10 THHN Wire - Non-Metallic Connectors	EA	6
6-34-4NM	3/4" x 4' #8 THHN Wire - Non-Metallic Connectors	EA	6
6-34-6NM	3/4" x 6' #8 THHN Wire - Non-Metallic Connectors	EA	6
6-34-8NM	3/4" x 8' #8 THHN Wire - Non-Metallic Connectors	EA	3



755-303SW

3 Pole Switch for Mini-Splits

Three-pole, 30 Amp, 600 Volt rated disconnect switch provides safe, reliable manual ON/OFF switching control for mini-splits and HVAC systems. This switch meets the local code requirements of breaking both the power lines (L1 and L2) and the communication line of the mini-split's indoor unit for service.

ITEM	DESCRIPTION	UOM	OM
755-303SW	3 Pole Switch for Mini-Splits	EA	1



PSP72KA

Surge Protection

Surge protection is critical in order to protect the components of mini-split equipment. The PSP72KA split-phase surge protector is easily wired in parallel with the product it protects. Its weatherproof enclosure protects against harsh environments and a visible LED provides an easy-to-identify status.

ITEM	DESCRIPTION	UOM	OM
PSP72KA	120/240VAC Split Phase Surge Protective Device	EA	1

DITEK Kool Guard Voltage Monitoring/Surge Protection

DTK-KG2 Kool Guard Series Intelligent Voltage Monitoring is specifically designed to protect HVAC equipment from harmful undervoltage and overvoltage events that can damage sensitive electronics and mechanical components within the system. The DTK-KG2 also incorporates DITEK's state-of-the-art surge protection design to shield the equipment from damaging transient voltage surges and spikes. The standard UL Type 4X polycarbonate enclosure allows the unit to be easily installed in harsh outdoor environments.



ITEM	DESCRIPTION	UOM	OM
DTK-KG2	Kool Guard Voltage Monitoring	EA	1

HVAC Mini-Split Wiring Solutions

Southwire® EZ-INTM Mini-Split cable is available in both shielded and non-shielded configurations, has brought ease of installation and savings to HVAC mini-split installations by eliminating the use of conduit or cable trays.



59351202

ITEM	DESCRIPTION	UOM	OM
59351202	EZ-IN Cable, 14-4, 600V, 250ft	EA	1
59351203	EZ-IN Cable, 14-4, 600V, 50ft	EA	1
64235201	EZ-IN Connector Straight	EA	1
64275801	EZ-IN Connector Rt Angle	EA	1
230-14-4EZ	14/4 EZ-IN 600V, 50' coil	EA	1



64235201

Packard Mini-Split Dry Cell Capacitors

Specifically designed for mini-splits and other equipment with confined space. Constructed with self-healing dielectric metalized polypropylene film.



PMSCF4

ITEM	DESCRIPTION	UOM	OM
PMSCF1	1Mfd x 450V Dry Cell Cap	EA	1
PMSCF1.5	1.5Mfd x 450V Dry Cell Cap	EA	1
PMSCF2	2Mfd x 450V Dry Cell Cap	EA	1
PMSCF2.5	2.5Mfd x 450V Dry Cell Cap	EA	1
PMSCF3	3Mfd x 450V Dry Cell Cap	EA	1
PMSCF3.5	3.5Mfd x 450V Dry Cell Cap	EA	1
PMSCF4	4Mfd x 450V Dry Cell Cap	EA	1
PMSCF5	5Mfd x 450V Dry Cell Cap	EA	1
PMSCF6	6Mfd x 450V Dry Cell Cap	EA	1

Mini-Split Installation Kits

The DiversiTech MSK003-6 (non-fused disconnect) and MSK003F-6 (fused disconnect) Mini-Split Installation Kits contain a disconnect, whip, surge protector, wall sleeve, and drain line fitting. The kits offer convenience and flexibility with the electrical products needed for the growing ductless installation market.



**MSK003-6
MSK012-6**



MSK003F-6

KIT CONTENTS	FEATURES AND BENEFITS
MSK003-6 & MSK003F-S Non-Metallic Whip 3/4" x 6' (6-34-6NM) MSK012-6 Non-Metallic Ship 1/2" x 6' (6-12-6NM)	Three distinct wire colors for ease of hook-up (#8 THHN Wire)
MSK003F-6 60 Amp Fused Metallic Disconnect (DDS-60) MSK003-6 & MSK012-6 60 Amp Non-Fused Metallic Disconnect (DDS-60U)	For applications up to 60 Amps
Surge Protector (PSP72KA)	Easy to install and wire and provides critical surge protection for Ductless Systems
Mini-Split Drain Line Adapter (230-DLF18)	Provides a flexible side to attach to PVC piping and a rigid side that adapts to drain lines from 14-22 millimeters
Wall Sleeve Fitting (230-WS3)	Provides a 2-7/8" diameter space to accommodate linesets







Mini-Split Installation Tools Kit

The hilmor HVAC/R Mini-Split Installation Tools Kit includes the tools you need to install a typical mini-split system. Tools to help you install with no sweat. Tools to help you flare connections without needing a third arm, setting proper torque with the digital adjustable torque wrench, hex key sets, the most useful 9 in 1 tool on the marketplace, and a manifold set with hoses to handle superheat and subcool calculations. All with the goal of helping you get in, get out and get on to the next install job.

ITEM	DESCRIPTION	UOM	OM
MSITK-DD	Mini-Split Installation Tools Kit	EA	1

INCLUDED WITH KIT

ITEM	DESCRIPTION
1937685	Orbital Flare Kit with TC and DT 
1839053	HVAC Multi-Tool 9 in 1
1839048	Hex Key Folding Set 5/16" to 5/32"
1891472	Hex Key Folding Set Metric
1839080	Backpack Bag
1963826	Digital Adjustable Jaw Torque Wrench Kit 
1947967	Valve Core Removal Tool 1/4" 
MSA-31F	Mini-Split Brass Adaptor 
421-CC	Imperial Brass 4-Valve Manifold



1839015



CSCBFOAM

(all other products sold separately, case not included.)



1947968

1947967



Compact Swage Tool Kit

Item	Description	UOM	OM
1839015	Compact Swage Tool Kit	EA	1
CSCBFOAM	Foam Storage Tray	EA	1

TECHNICAL SPECIFICATIONS

Tube Materials	Soft - Copper, Steel, Aluminum, Brass
Heads Included	3/8", 1/2", 5/8", 3/4", 7/8", 1-1/8"
Deburring Tool	Pencil Type Included
Carrying Case	Included
Optional Heads	1839023 1-3/8", 1839024 1-5/8", 1964043 2-1/8"



Picture-perfect Swaging

Simply select the correct head, place it on the tool and make a quality swage.



Less Effort, More Control

The power to swage 1-1/8" tubing and the control to swage 3/8" without splitting the tube.



One-handed Operation

The lever mechanism and release button allow for one-handed swaging without the fatigue.

Valve Core Removal Tool

ITEM	DESCRIPTION	UOM	OM
1947967	1/4" Valve Core Removal Tool	EA	1
1947968	5/16" Valve Core Removal Tool	EA	1

TECHNICAL SPECIFICATIONS

Connection Sizes	1/4" or 5/16"
Vacuum Level Tested To	20 Microns
Max Working Pressure	800 PSI
Burst Pressure	4,000 PSI
Operating Temperature	-20° to +180°F
Valve Type	Double O-Ring Ball Valve



Jobsite Storage

Built-in rare-earth magnet for convenient plunger storage, minimizing lost parts on the job.



Vacuum Gauge Port

1/4" side flare to easily connect a vacuum gauge.



Superior Versatility

Vacuum tested to 20 microns and tested to 800 PSI working pressure.



Orbital Flare

ITEM	DESCRIPTION	UOM	OM
1838952	Orbital Flare	EA	1

TECHNICAL SPECIFICATIONS	
Tube Materials	Soft - Copper, Steel, Aluminum, Brass
Tubing Sizes (O.D.)	3/16", 1/4", 5/16", 3/8", 1/2", 5/8", 3/4"
Flare Type	45 Degree



Precise Flares, Every Time

An off-center mounted cone spins on axis to effectively produce quality flares.



No Cracked Tubes

A clutch mechanism stops the flaring when the job is done.



1838952



Large Flare/Swage

ITEM	DESCRIPTION	UOM	OM
1838948	Large Flare/Swage	EA	1

TECHNICAL SPECIFICATIONS	
Tube Materials	Soft - Copper, Steel, Aluminum, Brass
Heads Included	3/4", 7/8", 1-1/8"
Flare Type	45 Degree



Durable

The cast steel yoke and hardened flaring bar are made to be knocked around.



Control

Steel wing nuts make it easy to hold the pipe securely.



Quality Flares

An extra-long handle provides extra leverage and the cone self centers for consistent, quality flares.



1838948



1963826



Lighten Your Load

Adjustable jaw eliminates the need to carry around extra heads.



Precise Readings

Digital adjustments help ensure torque measurement accuracy.



Extra Confidence

LED lights and buzzer indicate that desired torque has been reached.

Digital Adjustable Torque Wrench

ITEM	DESCRIPTION	UOM	OM
1963826	Digital Adjustable Torque Wrench	EA	1

TECHNICAL SPECIFICATIONS

Jaw Size (Inches)	1/4" to 11/16"
Jaw Size (mm)	5mm to 27mm
Accuracy	+/- 3%
Measurement Increments	0.1 (N-m, Ft-lb)
Torque Range	5 - 95 (Ft-lbs)
	60 - 1,195 (In-lbs)
	69 - 1,378 (kg-cm)
	6.8 - 135 (N-m)
Operation Modes	Track, Peak
Memory Settings	9 - Programmable



1937881



Reduced Stripping

Socket design drives the fastener from the flats, not the corners, minimizing slippage.



Tapered Design

Tapered socket design improves access in hard to reach tight places.



Magnetic Shafts

Uses a 1/4-inch magnetic hex shaft, metal shavings and debris are easily wiped off.

Reversible Magnetic Nut Drivers

ITEM	DESCRIPTION	UOM	OM
1937881	3-Pack 2-3/4" Reversible Magnetic Nut Driver	EA	1
1937882	3-Pack 4" Reversible Magnetic Nut Driver	EA	1
1937883	3-Pack 6" Reversible Magnetic Nut Driver	EA	1
1937887	30-Pack 2-3/4" Reversible Magnetic Nut Driver	EA	30
1937888	30-Pack 4" Reversible Magnetic Nut Driver	EA	30
1937889	30-Pack 6" Reversible Magnetic Nut Driver	EA	30

TECHNICAL SPECIFICATIONS

Socket Sizes	1/4" x 5/16"
Socket Forgings	6150 Steel
Socket Hardness	> HRC 48



Wireless Vacuum Gauge

ITEM	DESCRIPTION	UOM	OM
1950217	Wireless Vacuum Gauge	EA	1

TECHNICAL SPECIFICATIONS	
Accuracy	+/- 5% of Reading +/- 10 microns
Resolution	5 to 2,000 microns - 1 micron
	2,001 to 5,000 - 100 microns
	5,001 to 10,000 - 250 microns
	10,001 to ATM - 1,000 microns
Units	micron, mTorr, Torr, mmhg, mBar, kPa and Pa
Wireless Range	33 Feet (10 meters) Unobstructed
Operating Temperature	-4°F to 122°F (-20°C to 50°C)
Operating Humidity	Up to 75% Relative Humidity
Refresh Rate	0.5 Seconds
Battery life	80 Hours (Without Backlight)



1950217



Easy to Read

Backlit LCD makes reading in the dark easy.



Durable Construction

Withstands daily transportation and jobsite abuse.



Added Versatility

Includes foldable hook and magnet to easily attach to any unit.

Compact Vacuum Gauge

ITEM	DESCRIPTION	UOM	OM
CVG1200	Compact Vacuum Gauge	EA	1

TECHNICAL SPECIFICATIONS	
Accuracy	+/- 10% of Reading +/- 10 microns
Resolution	1 to 2,000 microns - 1 micron
	2,001 to 20,000 - 100 microns
	20,001 to 100,000 - 1000 microns
	100,001 to 300,000 - 10,000 microns
Operating Temperature	10°F to 122°F (-12°C to 50°C)
Operating Humidity	Up to 75% Relative Humidity
Refresh Rate	0.5 Seconds
Battery life	50 Hours (Without Backlight)
Protective Case	Included



CVG1200



Easy to Read

Backlit LCD makes reading in the dark easy.



Convenient Storage

Protective case keeps the gauge safe and quick to grab.



Added Convenience

Programmable audible micron alarm with high and low settings.



HLC007



Foam Pigs



**HLCFOAM
Foam Storage Tray**

(all other products sold separately, case not included.)

Lineset Cleaner Kit

ITEM	DESCRIPTION	UOM	OM
HLC007	Lineset Cleaner Kit	EA	1
HLCFOAM	Foam Storage Tray	EA	1

TECHNICAL SPECIFICATIONS

Nozzle Sizes	3/8", 1/2", 5/8", 3/4", 7/8"
Pressure Inlet	1/4" SAE Male
Max PSI	70
Expansion Packs	HLN014 1/4" Nozzle, 5 Foam Pigs HLN118 1-1/18" Nozzle, 5 Foam Pigs

Optional Accessories

ITEM	DESCRIPTION	UOM	OM
HLP038	10-Pack 3/8" Foam Pigs	EA	1
HLP012	10-Pack 1/2" Foam Pigs	EA	1
HLP058	10-Pack 5/8" Foam Pigs	EA	1
HLP034	10-Pack 3/4" Foam Pigs	EA	1
HLP078	10-Pack 7/8" Foam Pigs	EA	1
HLP099	10-Pack 2 of Ea. Size Foam Pigs	EA	1
HLP1450	50-Pack 1/4" Foam Pigs	EA	1
HLP3850	50-Pack 3/8" Foam Pigs	EA	1
HLP5850	50-Pack 5/8" Foam Pigs	EA	1
HLP3450	50-Pack 3/4" Foam Pigs	EA	1
HLP7850	50-Pack 7/8" Foam Pigs	EA	1



Picture-Perfect Cleaning

Simply connect the correct nozzle, chamber the corresponding pig size, connect to a regulated compressed Nitrogen source, and pull the trigger for a perfectly clean lineset.



Twice the Versatility

One tool that has the ability to effectively wipe contaminants and remaining oil from linesets ranging from 3/8" to 7/8".



Premium Care

The rinseable / reusable foam cleaning pigs are specifically formulated and manufactured to flow through normal lineset configurations and most deformations.



Compact Bender Kits

Item	Description	UOM	OM
1839032	Compact Bender Kit	EA	1
1926598	Deluxe Compact Bender Kit	EA	1
CSCBFOAM	Foam Storage Tray	EA	1

TECHNICAL SPECIFICATIONS	
Tube Materials	Soft - Copper, Steel, Aluminum, Brass
Mandrel Sizes	1/4", 5/16", 3/8", 1/2", 5/8", 3/4", 7/8"
Reverse Bending Attachment	Deluxe Model only
Bending Mechanism	Ratcheting
Tube Release Type	Quick Release Trigger
Carrying Case	Included



Simple Setup

Universal crossbar and color-coded mandrels make identifying and changing sizes quick and easy.



One-handed Operation

A ratcheting mechanism and innovative release lever allow for bending with one hand.



Small Space Capable

A compact design allows it to fit where others can't.



1839032



1926598



CSCBFOAM
Foam Storage Tray

(all other products sold separately, case not included.)

EasyBend® Lineset Bender Kit

EasyBend® Lineset Bender Kit is the simplest way to bend copper lineset without even removing the insulation. The EasyBend® works on soft copper linesets 1/4 in., 3/8 in., 1/2 in. and 5/8 in. This internal pipe bending tool allows for kink-free bending.

Item	Description	UOM	OM
EB-1000	EasyBend® Lineset Bender Kit	EA	1

TECHNICAL SPECIFICATIONS	
Tubing Type	Soft Copper Only
Sizes Included	1/4 in., 3/8 In., 1/2 in., 5/8 In
Bender Length	13 ft.



EB-1000



THE HIGH-TEMPERATURE, LEAKAGE-FREE FLARING AND SWAGING METHOD, DESIGNED FROM THE GROUND UP FOR HVAC SYSTEMS.



S6000



Packed in convenient storage case

SPIN® Tools

The Original Flaring and Swaging Bits

SPIN® Flaring and Swaging bits deliver the best flares and swages in seconds! Gives you consistent sizes on flares and swages, every time. Using an innovative technology, SPIN® tools are designed to quickly flare or swage virtually any copper or aluminum tube. Perfect for mini-splits and ductless A/C copper and aluminum tubes, it keeps the tubing thickness for high pressure refrigerant fluids such as R410A, R22, etc. Available in sets from 4 up to 6 pieces for HVAC/R applications; and 3 pieces for plumbing applications.

Swaging

ITEM	DESCRIPTION	UOM	OM
S4000	4-Pc Swaging Set 1/4 in. - 5/8 in.	PK	1
S5000	5-Pc Swaging Set 1/4 in. - 3/4 in.	PK	1
S6000	6-Pc Swaging Set 1/4 in. - 7/8 in.	PK	1
P3000	3-Pc Plumbing Set 1/2 in., 3/4 in., 1 in.	PK	1

SWAGING INDIVIDUALS SAE		UOM	OM
S1014	1/4 in. Swaging Bit	EA	1
S1038	3/8 in. Swaging Bit	EA	1
S1012	1/2 in. Swaging Bit	EA	1
S1058	5/8 in. Swaging Bit	EA	1
S1034	3/4 in. Swaging Bit	EA	1
S1078	7/8 in. Swaging Bit	EA	1

TECHNICAL SPECIFICATIONS FLARING	
Shank Size	3/8 in.
Recommended RPM	≥ 1,800
Tubing Type	Hard or Soft Copper



Flaring

ITEM	DESCRIPTION	UOM	OM
F4000	4-Pc Flaring Set 1/4 in. - 5/8 in.	PK	1
F5000	5-Pc Flaring Set 1/4 in. - 3/4 in.	PK	1
F6000	6-Pc Flaring Set 1/4 in. - 7/8 in.	PK	1

FLARING INDIVIDUALS SAE		UOM	OM
F1014	1/4 in. Flaring Bit	EA	1
F1038	3/8 in. Flaring Bit	EA	1
F1012	1/2 in. Flaring Bit	EA	1
F1058	5/8 in. Flaring Bit	EA	1
F1034	3/4 in. Flaring Bit	EA	1
F1078	7/8 in. Flaring Bit	EA	1

TECHNICAL SPECIFICATIONS FLARING	
Shank Size	3/8 in.
Recommended RPM	≥ 1,800
Tubing Type	Soft Copper



F6000



Packed in convenient storage case

Flaring/Plumbing

FLARING/PLUMBING INDIVIDUALS SAE		UOM	OM
P1012	1/2 in. Flaring/Plumbing Bit	EA	1
P1034	3/4 in. Flaring/Plumbing Bit	EA	1
P1100	1 in. Flaring/Plumbing Bit	EA	1



P3000

CoilJet® CJ-125 HVAC Coil Cleaner System



CJ-125

ITEM	DESCRIPTION	UOM	OM
CJ-125	CoilJet Portable Coil Cleaner	EA	1

TECHNICAL SPECIFICATIONS	
Output Pressure	125 PSI (8.5 BAR)
Flow Rate	0.7 GPM
Chemical Ratio Range	30:1 - 4:1
Coil Capacity	Upto 4" Thick
Capacity Water	3.375 Gal.
Capacity Chemicals	0.4375 Gal.
Motor	0.2 HP
Battery	12v, 15Ah

No Water, No Power, No Problem

Ideal for cleaning coils in locations where water and power may be inaccessible, such as rooftops and attics.

Optional Equipment

Customize your coil cleaning needs with 20+ wands, extensions & nozzles.

CoilJet® CJ-200E Electric Portable Coil Cleaner



CJ-200E

ITEM	DESCRIPTION	UOM	OM
CJ-200E	CoilJet Portable Coil Cleaner	EA	1

TECHNICAL SPECIFICATIONS	
Output Pressure	220 PSI (15.1 BAR)
Flow Rate	0.5 GPM
Chemical Ratio Range	30:1 - 4:1
Coil Capacity	Up to 4" Thick
Capacity Water	3.375 Gal.
Capacity Chemicals	0.4375 Gal.
Motor	0.2 HP
Input Power	115V, 60Hz, 1.5A
Power Cord Length	15 Ft.

Portable & Powerful Coil Cleaning

CoilJet 200E offers more pressure, continuous water supply and 110V convenience.

Optional Equipment

Customize your coil cleaning needs with over 20 wands, extensions and nozzles.

CoilShot® Condenser Cleaner Tool

ITEM	DESCRIPTION	UOM	OM
SC-CS-100	CoilShot Condenser Cleaning Tool	EA	1

TECHNICAL SPECIFICATIONS	
Output Pressure	Up to 70 PSI
Flow Rate	Up to 3 GPM

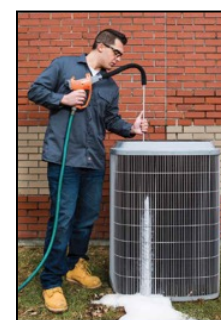
The Future of Coil Cleaning

The unit connects directly to a garden hose and uses a single premeasured tablet to apply foaming coil cleaner directly to coils.

Optional Equipment

For added cleaning performance, use CoilShot® condenser cleaner with the optional 3 ft. wand.

ACCESSORY ITEM	DESCRIPTION	UOM	OM
SC-CS-TABS	CoilShot Tablets	EA	1



SC-CS-TABS

SpeedyFoam® Condenser Coil Cleaner

ITEM	DESCRIPTION	UOM	OM
SC-FCC-1	SpeedyFoam® Condenser Cleaning Solution	CASE	1

TECHNICAL SPECIFICATIONS	
Appearance	Purple
Odor	Lemon Scent

Power Cleaner

This cleaner cleans even the dirtiest, greasiest coils, but is safe on coils and safer for you and your co-workers.

Ultra Foaming

SpeedyFoam has an ultra foaming micro bubble action that moves deep into coils to lift and flush dirt and debris.



SC-FCC-1



MSB-360-KIT

Mini-Split Bib® Kit 360

ITEM	DESCRIPTION	UOM	OM
MSB-360-KIT	Mini-Split Bib Kit 360	EA	1

TECHNICAL SPECIFICATIONS

Fits Ductless Fans up to:	44" Wide
Drain Line Length	8 Ft.
Bib Material Thickness	4 Mil
Dimensions	36" x 16"
Weight	1.5 Lbs

Clean In-Place Solution

The Mini-Split Bib Kit 360 is the most complete way to clean ductless mini-split coils, blower wheels and more. This kit allows you to safely and quickly clean virtually any mini-split system the correct way using pressurized water on coils, blower wheels, and more. The patented technology keeps water away from walls, ceilings, and other surroundings and directs it into the 5 gallon bucket for disposal, so it's clean and safe all around.

Included Equipment

Adhesive wrap, brackets, support rib, deflector plates, one piece 360 bib with 8 ft drain and a 5 gallon bucket.



MSB-KIT

Mini-Split Bib® Kit

ITEM	DESCRIPTION	UOM	OM
MSB-KIT	Mini-Split Bib Kit	EA	1

TECHNICAL SPECIFICATIONS

Fits Ductless Fans up to:	44" Wide
Drain Line Length	8 Ft.
Bib Material Thickness	4 Mil
Dimensions	36" x 16"
Weight	1.5 Lbs

Clean In-Place Solution

The fastest way to clean ductless mini-split coils, fans, and more. Safely clean virtually any mini-split system 30" to 44" the correct way- using pressurized water on the coils and fans. This patented technology keeps water away from walls and other surroundings while directing it into the 5 gallon bucket for disposal.

Included Equipment

Adhesive wrap, brackets, support rib, deflector plates, bib with 8 ft drain and a 5 gallon bucket.



Mini-Split Bib® Kit XL

ITEM	DESCRIPTION	UOM	OM
MSB-KIT-XL	XL Mini-Split Bib Kit	EA	1

TECHNICAL SPECIFICATIONS	
Fits Duct Fan Units	44 - 66 In. Wide
Drain Line Length	8 Ft.
Bib Material Thickness	4 Mil
Dimensions	52" x 16"
Weight	1.5 Lbs



MSB-KIT-XL

Clean In-Place Solution

The MSB-KIT-XL Mini-Split Bib Kit for coils/ductless fan units between 45-60 in. This kit is a fast way to clean larger commercial ductless mini-split coils, blower wheels and more. The patented technology fits ductless units and keeps water away from walls and other surroundings and directs it into the 5 gallon bucket for disposal, so it's clean and safe all around.

Included Equipment

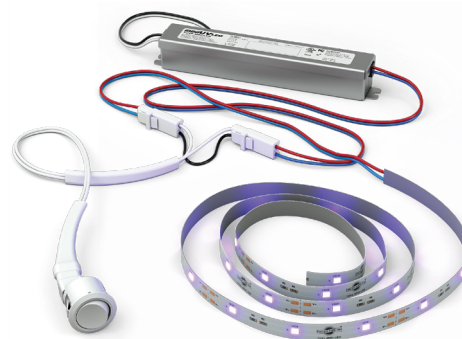
Bib, adjustable mounting brackets, 1 roll of protective tape, 3 deflector plates and 5 gallon bucket.

INDOOR AIR QUALITY

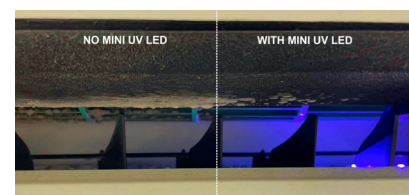
Mini UV LED Mini-Split System

Mini UV LED is the first-of-its-kind UV light LED system for mini-splits and similar limited space applications. Like all A/C systems, mini-splits are prone to internal mold growth and microbial contamination, particularly on and near the blower wheel. The LED light strip in Mini UV LED is designed to disinfect surfaces while having no impact on plastic materials.

ITEM	DESCRIPTION	UOM	OM
TUV-MINI-LED-SW	UV Light LED System for Mini-Splits	EA	1



TUV-MINI-LED-SW





JOIN



BUY HVAC/R PRODUCTS, GET REWARDED

ENROLL

Sign Up at
ContractorRewards.com

Scan for
Details



UPLOAD

Upload receipts
for purchases of
DiversiTech
products.

GET REWARDED

Shop the extensive
online REWARDS
catalog.

IT'S THAT EASY!



DUCTLESS ACCESSORIES PRODUCT CATALOG



DiversiTech Corporation
Duluth, GA 30097
P 800.995.2222

LIT-CAT-DUCTLESS

©2024 DiversiTech Corp.
diversitech.com

1224