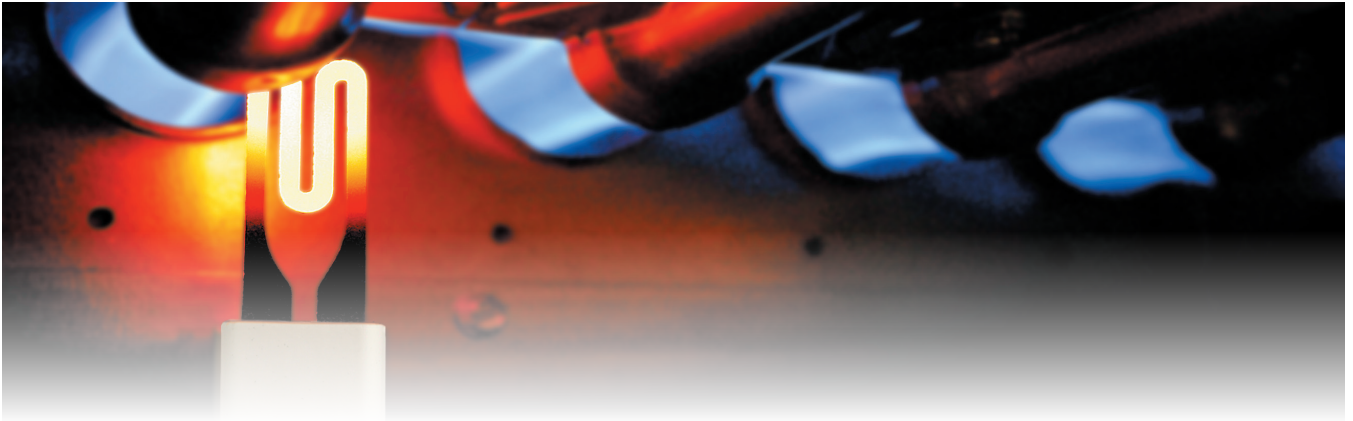




ALL NEW

Starlite

DIRECT REPLACEMENT HOT SURFACE IGNITERS

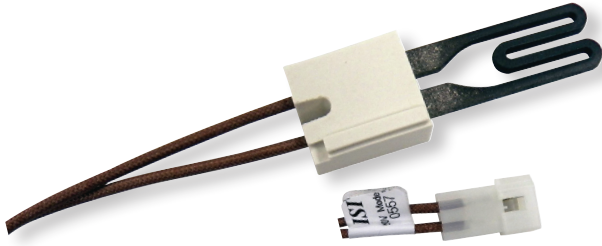


Starlite hot surface igniters are a reliable source of ignition for residential and commercial gas fired heating and home appliances. Starlite offers a wide variety of industry standard models in 120 and 230 volts.

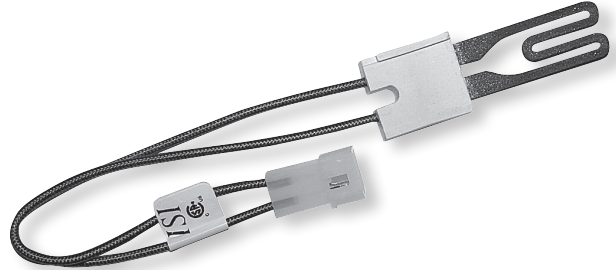
Furnace, Water Heater, and Boiler Applications

Features:

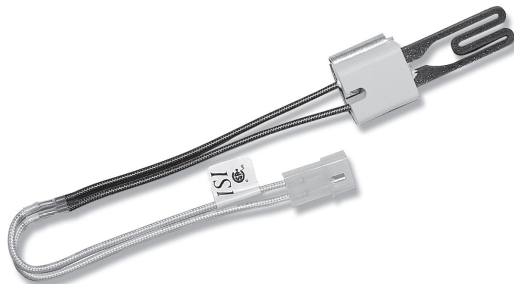
- CSA Approved
- Made in the USA
- Replacements for more than 20 OEM's
- Flat Silicon Carbide
- Overlapping "Hot Zone" provides safe and reliable ignition



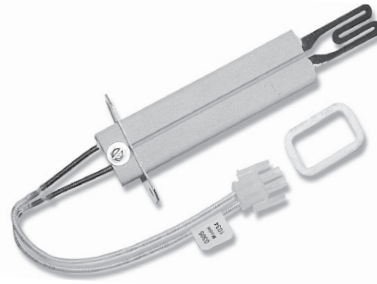
IG-0557 - 9" leads with connector
White Rodgers - 767A-303, 767A-353, 767A-357



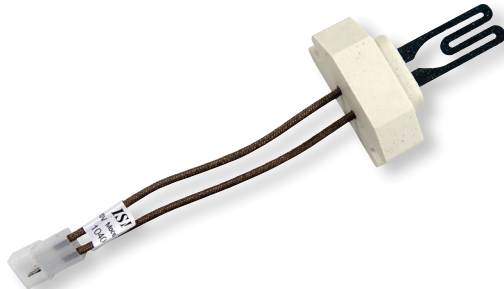
IG-0561 - 9" leads with connector
White Rodgers - 767A-301, 767A-306, 767A-350, 767A-354, 767A-361



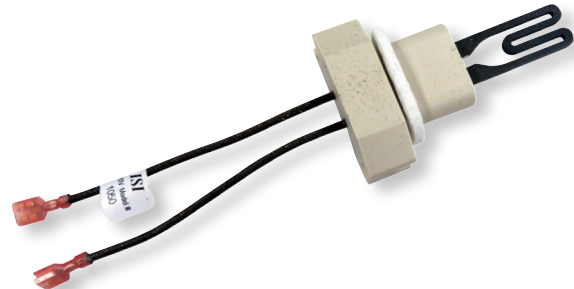
IG-1033 - 36" leads with connector
Clare - C238 Norton - 201/271 Robertshaw - 41-238, 41-402, 41-405



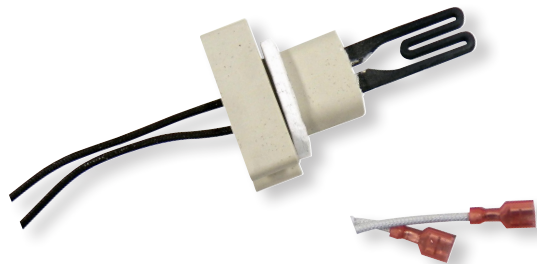
IG-1034 - Mounting bracket & gasket included, 8.5" leads with connector
Rheem - 62-22669-92



IG-1040 - 5.5" leads with connector
Weil McLain - 511-330-145



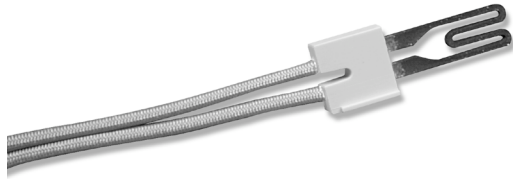
IG-1050 - 5.5" leads with connector
Raypak - 601559, 601600



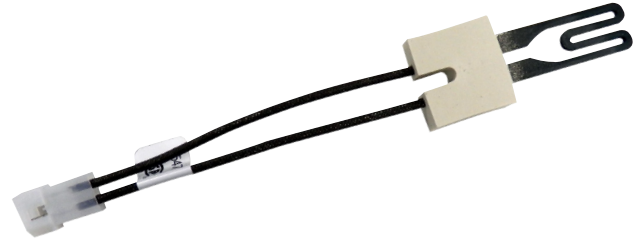
IG-1051 - 24" leads with connector
Raypak - 601826



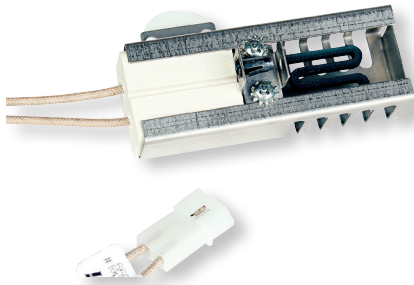
IG-1056 - 12" leads with connector
DMO - 20834, 26789 Norton - 201/271
Robertshaw - 41-242, 41-402, 41-405



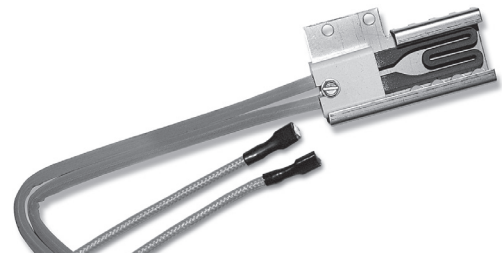
IG-1061 - 19" leads with sleeving and connector
Coleman - 14740511, 14740521



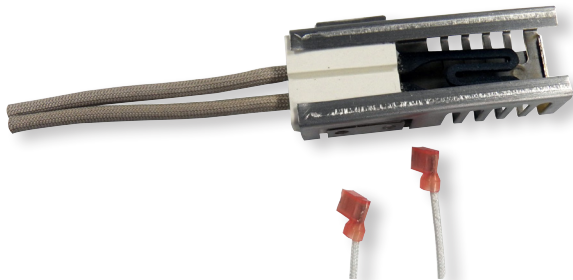
IG-1074 - 5.5" leads with connector
Detroit Radiant 101D



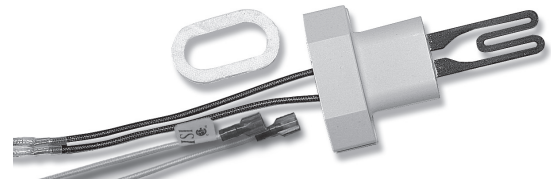
IG-1099 - Attached shield, 15" leads with connector
Rheem Water Heater - AP12553, 75-07-061 Norton - 501A



IG-1106 - Attached shield, 20" leads with sleeving and connector
GSW/John Woods/Giant Water Heater - 86483, 71082, 5260001425
Norton - 271R



IG-1108 - Attached shield, 25" leads with sleeving and connector
GSW/John Woods Water Heater - 63994



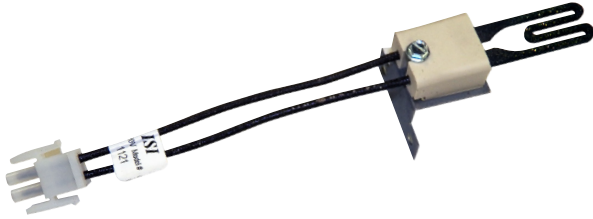
IG-1109 - Gasket included, 19" leads with connector
Lochinvar - PLT3400 Glowcore - HSRK-5, 1950006



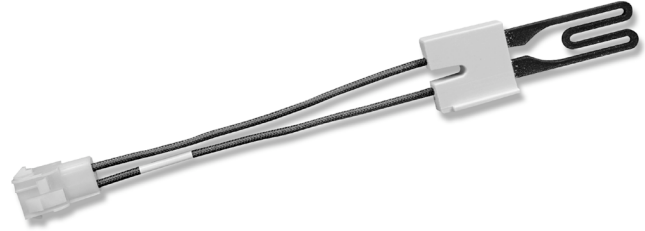
IG-1114 - Connector included, 5.5" leads
Nordyne/Partners Choice - 632363, 903758



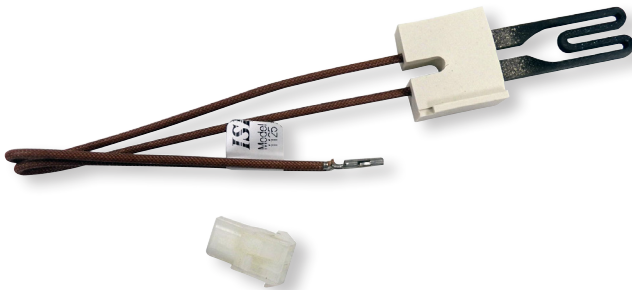
IG-1119 - 36" leads with sleeving and connector
Lennox - 33J3701



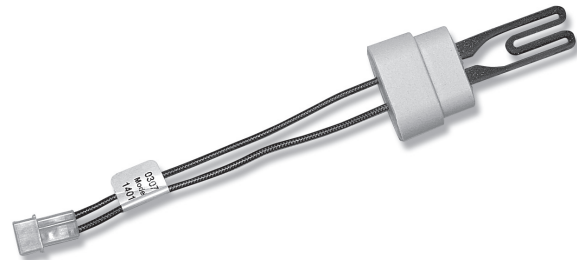
IG-1121 - Mounting bracket attached, 36" leads with connector
Goodman - B1401015, B1401018S Modine - 5H075032B



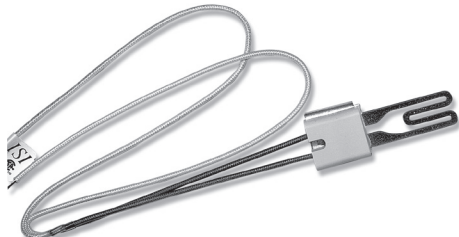
IG-1124 - 5.5" leads with connector
York - 025-32625-000



IG-1125 - Connector included, 10" leads
Nordyne/Partners Choice - 902499



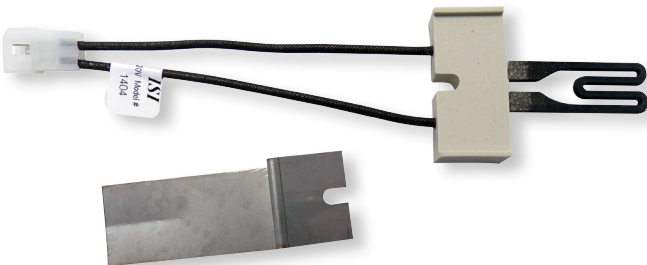
IG-1401 - Gasket included, 5.5" leads with connector
Amana - 10041601, B1336102, D99182 Trianco-Heatmaker - 2600-359
Uni-Line - 41-401 White Rodgers - 767A-309, 767A-356 Norton - 201A, 271A



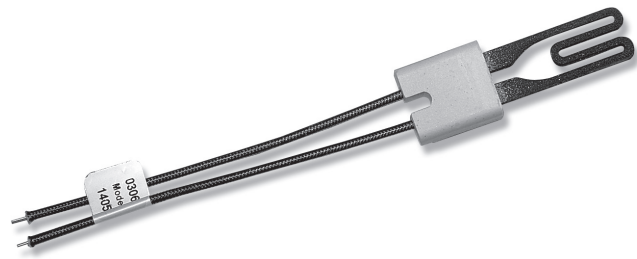
IG-1402 - 19" leads with wire nuts
Armstrong - 38322B001 Clare - C-238, C-242 DMO - 20834, 26789
Dornback - 271W Rheem - 62-22441-01 Trane - 340039P01, IGN30
Uni-Line - 41-402 Williamson - 09050 White Rodgers - 767A-371



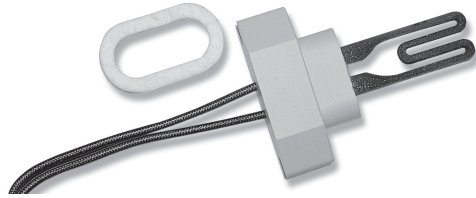
IG-1403 - 5.5" leads with wire nuts
Raypak - 600915 Snyder General - 1380654 Uni-Line - 41-403
Trane - B138196P01, IGN26, IGN30 Weil McLain - 511-330-193
White Rodgers - 767A-370



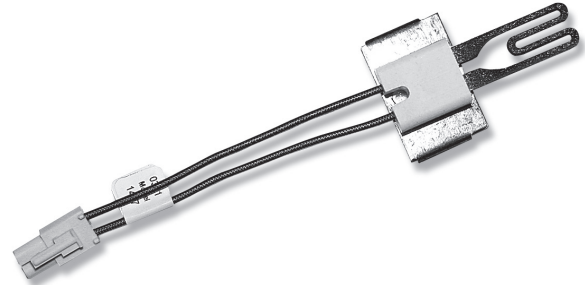
IG-1404 - Bracket included, 5.5" leads with connector
Uni-Line - 41-404 Weil McLain - 511-330-190
White Rodgers - 767A-382



IG-1405 - 5.5" leads with wire nuts
Uni-Line - 41-405 White Rodgers - 767A-361
York - 025-27766-000, 025-27774-000, 025-29043-000, 025-29050-000



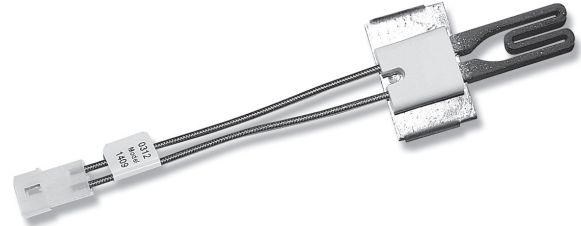
IG-1406 - Gasket included, 11" leads with wire nuts
 Glowcore - HSRK-7, 195001 Lochinvar - PLT2400 Surfaceigniter - FY009
 Uni-Line - 41-406 Weil McLain - 511-330-188
 Norton - 201J, 201Y, 271M, 271Y White Rodgers - 767A-374



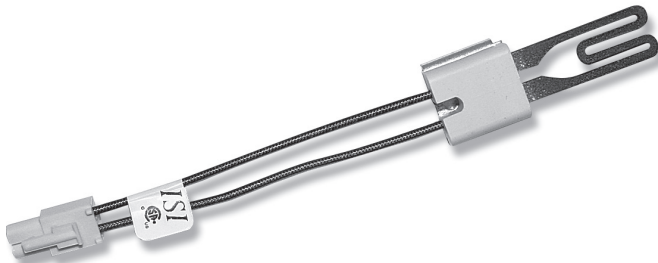
IG-1407 - 5.5" leads with connector
 Trane - B144676P02, IGN30 Uni-Line - 41-407 White Rodgers - 767A-376



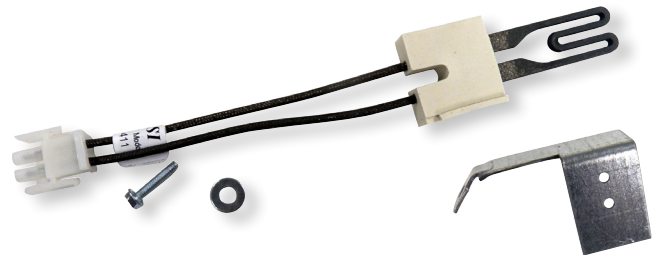
IG-1408 - 5.5" leads with connector
 Rheem - 62-22868-92, 62-22868-93, 62-22686-82, 62-22441-0
 Trane - B340039P01, IGN34 Uni-Line - 41-408, 41-411
 White Rodgers - 767A-372



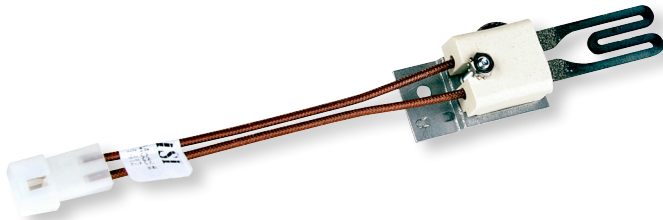
IG-1409 - 5.5" leads with connector
 Carrier - LH33ZS001, 002, 003, 004 Ducane - 20015201
 Snyder General - 1380672, 1380680 Trane - IGN26
 Uni-Line - 41-409 Weil McLain - 511-330-139 White Rodgers - 767A-370



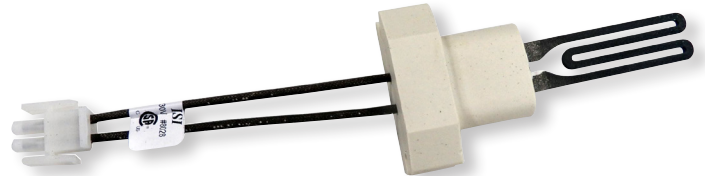
IG-1410 - 5.5" leads with connector
 Trane - B144676P01 Uni-Line - 41-410



IG-1411 - Bracket included, 5.5" leads with connector
 Rheem - 62-22868-82 Uni-Line - 41-411



IG-1412 - Bracket included, 5.5" leads with connector
 Goodman - B1401009 Intercity - 1009604 Uni-Line - 41-412



IG-8028 - 5.5" leads with connector
 Hayward Pool Products - 1503051401



IG-8030 - 5.5" leads, Connector included
 Nordyne/Partners Choice - 632320, 903179

Kit Part # IG-1090

Compatible with 17, 34, & 45 second warm-up modules

DESCRIPTION:

Specially designed kit for the replacement of 120 volt igniters in furnaces, boilers, space heaters, and water heaters.

APPLICATIONS:

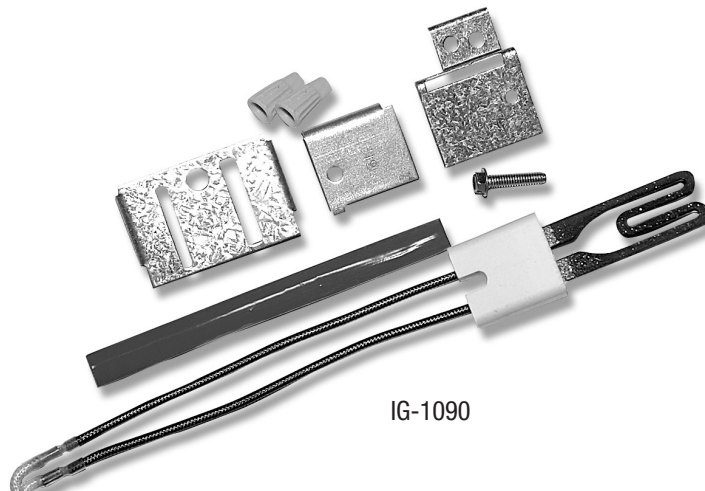
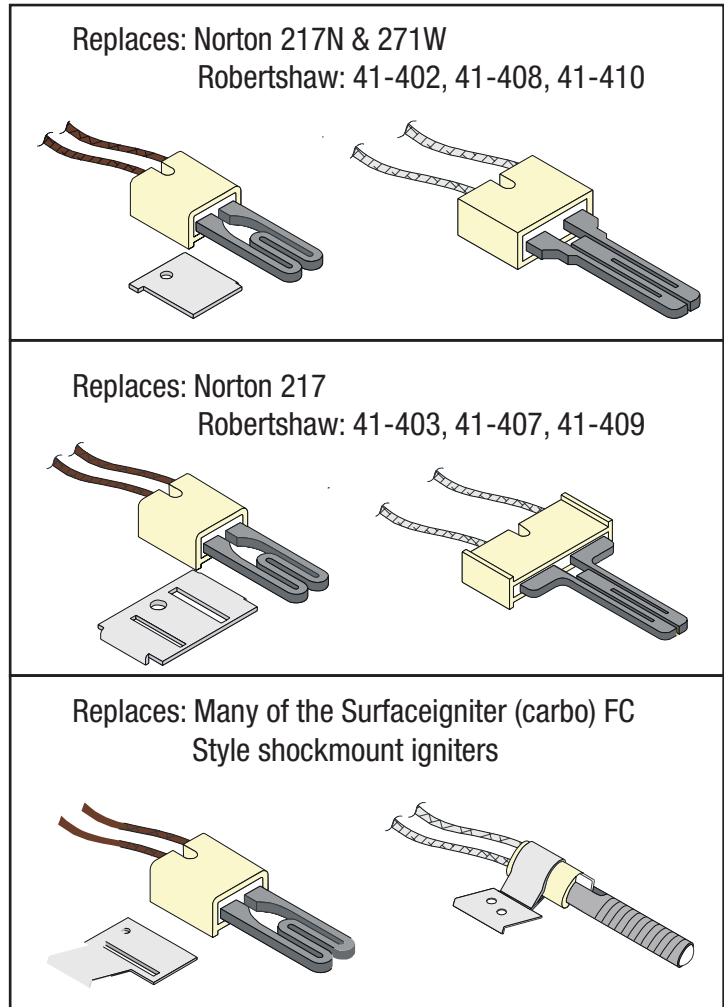
- Replaces igniters in over 60 furnace models manufactured by more than 20 OEM's.

FEATURES AND BENEFITS:

- Includes hardware and installation instructions for replacement of flat and spiral hot surface igniters.
- Convenient cross reference list included with every kit.
- Designed to reach ignition temperature in 17 seconds making kit compatible with 17, 34, and 45 second warm-up modules.
- Hot zone designed to replace competitive igniters for prompt and reliable ignition.
- All Starlite igniters are CSA approved.

EACH KIT INCLUDES:

- Starlite 120 volt igniter with 14" leads
- 3 adapter brackets
- Mounting screw
- Ceramic wire nuts
- 4" length of protective sleeving
- Cross reference list



IG-1090



Starlite® Furnace Igniter Kit Cross Reference

OEM Name	OEM Part No.	1090 KIT Compatible	Starlite Part No.
Amana	10735003	YES	-
Armstrong Air	38322B001	YES	1402
Carrier	LH33ZS001	YES	1409
	LH33ZS002	YES	1409
Clare	C238	YES	1033, 1402
	C242	YES	1402
Detroit Radiant	201D	YES	1405
DMO Ind. / Olsen	20834	YES	1056, 1402
	26789	YES	1056
Dornback	271W	YES	1402
Ducane	20015201	YES	1409
Enerco Tech	10399	YES	1402
Gemline	IG1000	YES	1090
HB Smith	50018	YES	1405
Hupp Industries	09050	YES	1402
Lennox	33J37	YES	1119
Metzger	201N	YES	1402
	201W	YES	1402
Nordyne	632-363	YES	1405
	903758	YES	1405
Raypak	600915	YES	1403
Rheem / Ruud	62-22441-01	YES	1402, 1408
	62-22868-92	YES	1408
	62-22868-93	YES	1408
Snyder General	1380654	YES	1403
	1380672	YES	1409
	1380680	YES	1409
Trane	B138196P01	YES	1403
	B144676P01	YES	1410
	B144676P02	YES	1407
	B340039P01	YES	1408
	IGN23	YES	1402
	IGN26	YES	1403, 1409
	IGN30	YES	1403, 1407
	340039P01	YES	1402
Uni-Line/ Robertshaw	41-238	YES	1033, 1402
	41-242	YES	1402
	41-402	YES	1402
	41-403	YES	1403
	41-405	YES	1405
	41-407	YES	1407
	41-408	YES	1408
	41-409	Some	1409
	41-410	YES	1410
	41-411	Some	1411

OEM Name	OEM Part No.	1090 KIT Compatible	Starlite Part No.
Viessman	9302-094	YES	1405
Weil McLain	511-330-139	YES	1409
	511-330-193	YES	1403
White Rodgers	767A-301	YES	0561
	767A-306	YES	0561
	767A-310	YES	0565
	767A-350	YES	0561
	767A-352	YES	0552
	767A-354	YES	0561
	767A-361	YES	0561
Williamson	767A-365	YES	0565
	09050	YES	1402
York	025-27766-000	YES	1405
	025-27774-000	YES	1405
	025-29043-000	YES	1405
	025-29050-000	YES	1405
Starlite	»	YES	0552
	»	NO	0557
	»	YES	0561
	»	YES	0565
	»	YES	1033
	»	NO	1034
	»	YES	1056
	»	NO	1061
	»	YES	1062
	»	NO	1106
	»	NO	1109
	»	NO	1121
	»	NO	1124
	»	NO	1401
	»	YES	1402
	»	YES	1403
	»	YES	1405
»	NO	1406	
»	YES	1407	
»	YES	1408	
»	Some	1409	
»	YES	1410	
»	Some	1411	
»	NO	1412	



 **Starlite**[®]
Furnace Igniters