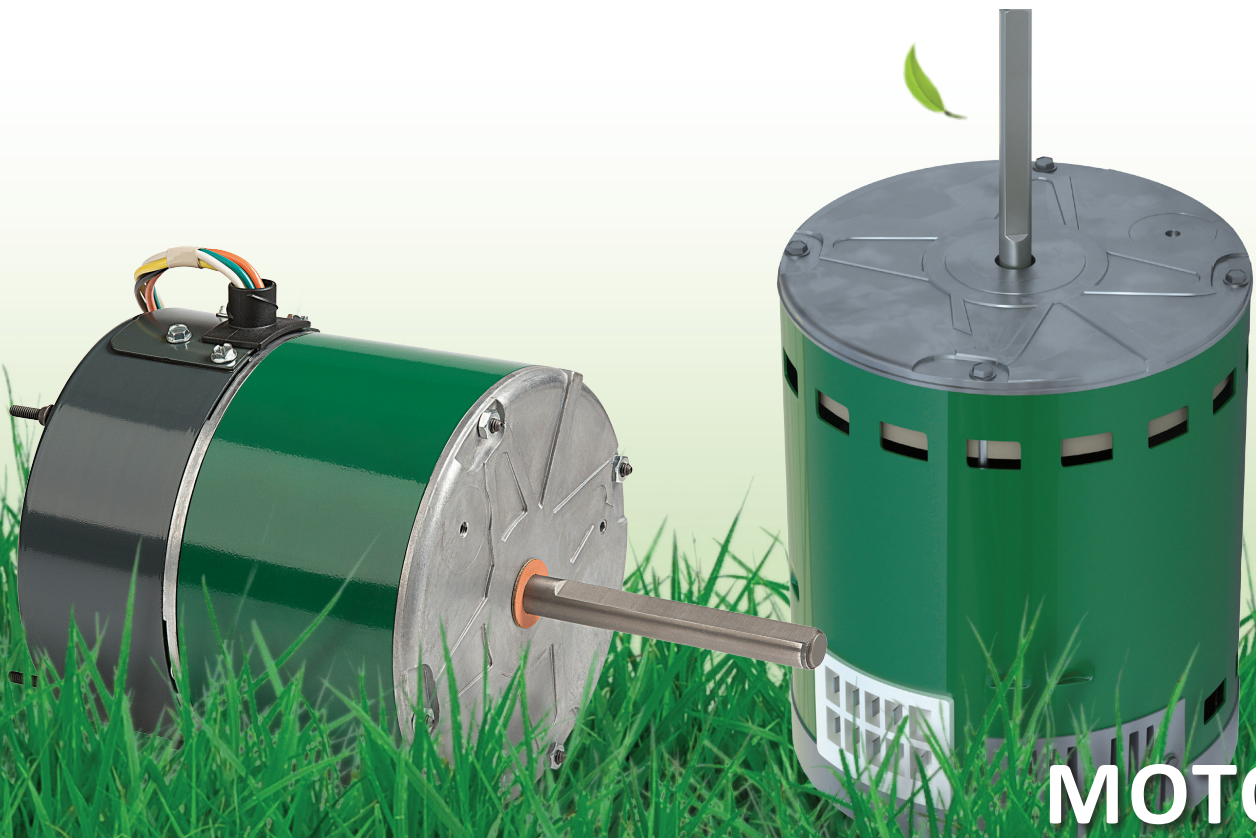




Evergreen[®]

EVER EFFICIENT, EVER RELIABLE, EVER PROFITABLE



 **genteq[®]**

**MOTOR
PRODUCT
GUIDE**

Indoor Blower Applications

Evergreen® EM

Replacement Motor for OEM ECM X13 Motors

- Residential / Light Commercial HVAC Systems
- Replace X13 and similar Constant Torque ECM
- Maintains system efficiency and performance
- Compatible with OEM harness
- Pre-programmed for truck stock
- No complex wiring or configuration
- Two year warranty

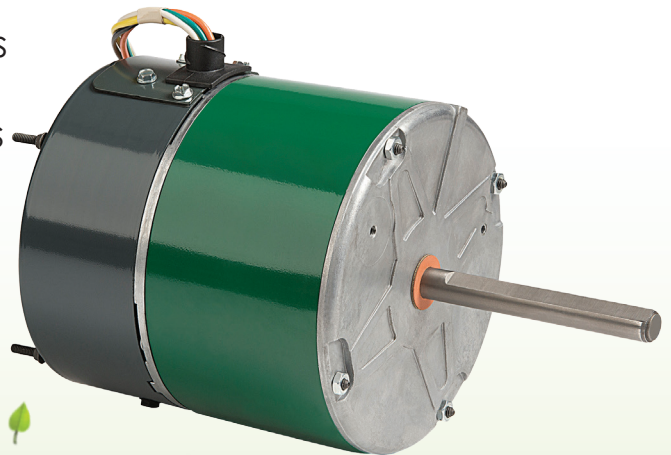


Condenser Fan Applications

Evergreen® OM

Upgrade/Replace PSC Outdoor Fan Motors

- Drop-in replacement for induction motors
- Easy Retrofit – Line Voltage Connections
- Quick Start and Operation
- Dual Rotation (CW/CCW)
- Efficiency up to 80%
- Two Year Warranty



Evergreen[®] EM

Designed to replace OEM constant torque standard ECM indoor blower motors such as X13 or equivalent competitor models with 24Vac speed taps.
[115 OR 208-230Vac Applications]

Evergreen EM is a drop in replacement for Constant Torque ECM such as X13 or equivalent competitor models with 24vac speed taps. With no programming requirements it's ready when you need it at your local HVAC distributor or on your truck. With no complex wiring, you will get the job done quickly.

RELIABILITY

- Encapsulated electronics
- Electronic Overload Protection
- 4kV surge protection
- Two year warranty
- UL and CSA recognized component

BENEFITS

- Replaces X13 and similar Constant Torque ECM with 24vac speed taps
- Pre-programmed for truck stock, ready to use out of the box
- (5) 24vac speed taps (Low-High)
- Compatible with OEM harness
- No complex wiring or configuration
- Automatically determines motor direction using Genteq's Rotation Sensing

Technology

- Maintains system efficiency and performance
- Soft Start and Off Ramp for quiet operation

MULTI-PURPOSE

- Replace/Upgrade PSC motors in applications that DO NOT require on/off delays such as Variable Air Volume (VAV), Fan Filter Units (FFU), A/C or heat pump only air handlers or package units. (Refer to installation manual for more details)
- (5) 24vac speed taps (Low-High)
- (3) 18vdc speed taps (Low-Med-High)
- PWM capable (600-1200rpm operating range)
- Improves air balancing
- Provides precise speed selection
- 0-10Vdc capable with separate harness
- Low voltage signal harness provided with motor

Evergreen® EM Applications

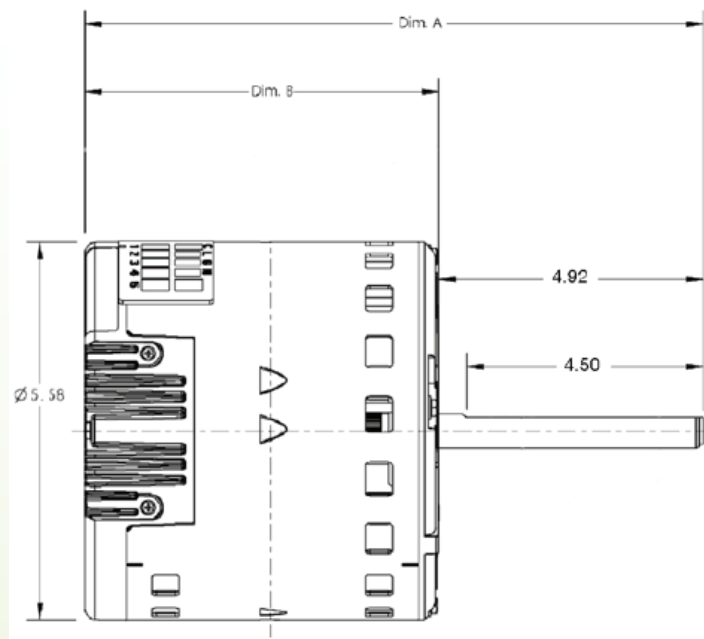
Replaces OEM Constant Torque ECM built with 24V speed taps with the following ratings:

- Horsepower: 1/3-1hp
- RPM Rating: 1070
- Voltage: 115V or 208-230V
- Rotation: CW & CCW

Evergreen® EM Motors

Item No.	HP	Volts	FLA	RPM	Speeds	Shaft	Dim A	Dim B
6103E	1/3	115V	4.8	1075	5/PWM	.5" x 5" (4.5" SF)	10.17"	5.25"
6105E	1/2	115V	6.8	1075	5/PWM	.5" x 5" (4.5" SF)	10.67"	5.75"
6107E	3/4	115V	8.4	1075	5/PWM	.5" x 5" (4.5" SF)	11.42"	6.5"
6110E	1	115V	10.9	1075	5/PWM	.5" x 5" (4.5" SF)	12.17"	7.25"
6203E	1/3	208-230V	2.8	1075	5/PWM	.5" x 5" (4.5" SF)	10.17"	5.25"
6205E	1/2	208-230V	4.1	1075	5/PWM	.5" x 5" (4.5" SF)	10.67"	5.75"
6207E	3/4	208-230V	6.0	1075	5/PWM	.5" x 5" (4.5" SF)	11.42"	6.5"
6210E	1	208-230V	7.6	1075	5/PWM	.5" x 5" (4.5" SF)	12.17"	7.25"

Rotation: Reversible // Frame: 48



Evergreen® OM

Designed to replace factory PSC outdoor fan motors in hvac systems.

Evergreen OM is a versatile high efficiency ECM designed to replace induction motors (shaded pole or PSC) in outdoor fan applications. These applications include motors used with direct-drive fan propellers (axial fan blades) in A/C or Heat Pump systems (including split or package systems).

FEATURES

- Reduce truck stock
- 230V model (stock #'s 6301 & 6303)
- Two motors replace induction motors rated:
 - 208-240 VAC
 - 1/10-1/3HP
 - 6-pole (1000-1100 RPM) & 8-pole (800-850 RPM)
 - CCW or CW
 - NEMA 48-frame with 1/2" shaft
 - Horizontal and Vertical Shaft Down (VSD) mounting
- Easy retrofit
- 60°C Ambient rated
- Efficiency up to 80% for improved system efficiency
- PWM enabled for multi-speed or low ambient controls
- Quiet start and operation

RELIABILITY

- Encapsulated electronics
- Electronic Overload Protection
- 6kV surge protection
- Two year warranty
- UL and CSA recognized component
- 60°C Ambient Rating

Evergreen® OM Motors

Item No.	HP	Volts	FLA	RPM	Speeds	Shaft	Dim A	Dim B
6301	1/5	208-240V	2.8	850/1100	2/PWM	.5" x 3" (2.5" SF)	8.49"	5.45"
6303	1/3	208-240V	3.5	850/1100	2/PWM	.5" x 3" (2.5" SF)	8.99"	5.95"

Rotation: Reversible // Frame: NEMA 48

