

April 2020

EasyGuard™

Product

EasyGuard™ Line Set Cover System

Application

The DiversiTech EasyGuard™ system is designed to protect line sets and insulation and meet local code requirements. The system is ideal for housing drain lines and control cables along with line sets for new installations. The EasyGuard™ system is fast and simple to install for both new and retro-fit applications.

Purpose

The DiversiTech EasyGuard™ system is used to cover and protect line sets, drain lines and control cables when they cannot be installed inside a wall.

Features and Benefits

- Rectangular channel profile provides larger capacity to hold more material.
- Blue film protects channel pieces and minimizes clean up after installation.
- Rigid top cover completely overlaps the bottom base for secure installation.
- Flat channel bottom minimizes deformation for easy top cover alignment and fitting.
- Bottom rail on channel base for mounting clips to assist in ease of securing line sets inside.
- Strong fittings with snap-on covers for fast installation.
- Alignment tabs on fittings for easy installation.
- Centerline indicators on fittings for easy positioning and alignment.
- Cable tie mounting hole to secure bent pipes in 90 degree bend.
- Made of strong UV resistant PVC and ASA materials for extended durability.
- Paintable to blend with exterior or interior color. (Follow paint manufacturer's recommendations for painting plastic.)



Package Metrics for Channels

Item Number	Channel A	Dimension B	Overall Length C
EG-D3W	9.45 in	7.9 in	80.71 in
EG-D4W	9.45 in	5.51 in	80.71 in

Specifications

Long Channel

- Material: PVC, UV Resistant
- Length: 6.5 ft.
- Protective Film: Blue
- Color: Pure White - CW903
- Mounting Clip Accessories (use inside the channel, sold separately) - 230-DCLIP, Pack of 50
- 230-DCLIP-10, Pack of 10 with 11" Cable Tie

Size	White	A	B
3"	EG-D3W	3.15"	2.362"
4"	EG-D4W	4.33"	2.952"

Wall Penetration Cover

- Material: ASA, UV Resistant
- Color: Pure White - CW903

Size	White	A	B	C
3"	EG-WC3W	4.8"	4.0"	2.4"
4"	EG-WC4W	6.0"	4.5"	3.0"

Union Coupling

- Material: ASA, UV Resistant
- Color: Pure White - CW903

Size	White	A	B	C
3"	EG-CP3W	3.2"	2.3"	2.6"
4"	EG-CP4W	4.3"	2.8"	3.0"

90° Flat Bend

- Material: ASA, UV Resistant
- Color: Pure White - CW903

Size	White	A	B	C
3"	EG-FB3W	5.3"	2.3"	3.2"
4"	EG-FB4W	6.5"	3.0"	4.3"

90° Inside Elbow

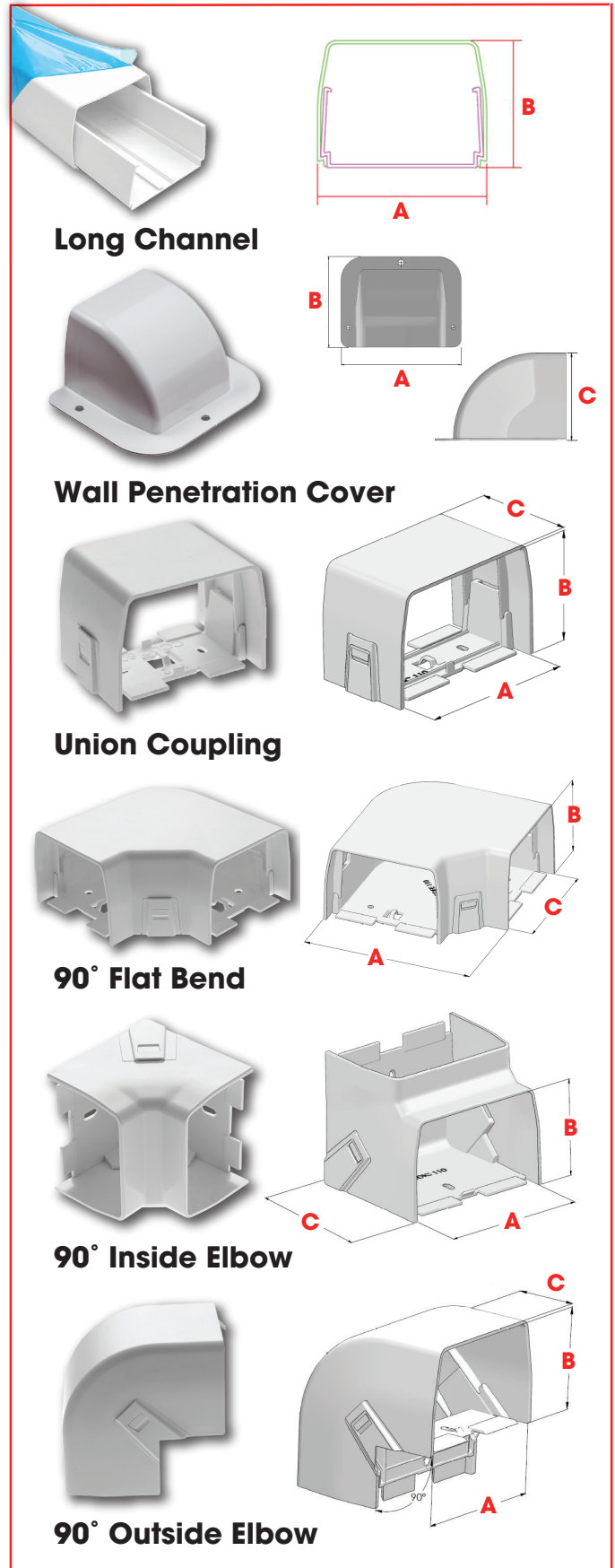
- Material: ASA, UV Resistant
- Color: Pure White - CW903
- To place around the internal corner

Size	White	A	B	C
3"	EG-EB3W	3.2"	2.3"	3.5"
4"	EG-EB4W	4.3"	3.0"	4.0"

90° Outside Elbow

- Material: ASA, UV Resistant
- Color: Pure White - CW903
- To place around the outside corner

Size	White	A	B	C
3"	EG-EIN3W	3.2"	2.3"	1.6"
4"	EG-EIN4W	4.3"	3.0"	1.8"



Specifications (cont.)

T-Joint

- Material: ASA, UV Resistant
- Color: Pure White - CW903
- To create a tee connection between three pieces of EasyGuard™

Size	White	A	B	C
3"	EG-TJ3W	7.1"	5.3"	2.3"
4"	EG-TJ4W	8.4"	6.5"	3.0"

Reducer Coupling

- Material: ASA, UV Resistant
- Color: Pure White - CW903
- To join two sizes of EasyGuard™

Size	White	A	B	C
3"	EG-TC34W	2.5"	1.625"	3.375"

Duct End

- Material: ASA, UV Resistant
- Color: Pure White - CW903
- To terminate a run of EasyGuard™ to a small opening

Size	White	A	B	C
3"	EG-DE3W	3.2"	2.3"	5.3"
4"	EG-DE4W	4.3"	3.0"	5.4"

Soffit Fittings

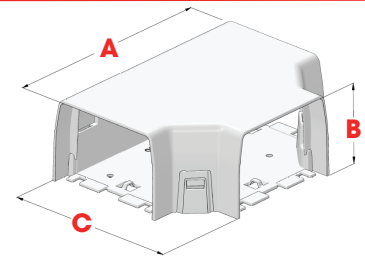
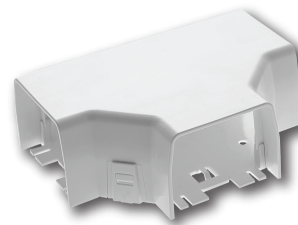
- Material: ASA, UV Resistant
- Color: Pure White - CW903
- Ideal for outdoor applications

Size	White	A	B	C
3"	EG-SF3W	4.5"	3.0"	1.0"
4"	EG-SF4W	5.7"	3.6"	1.0"

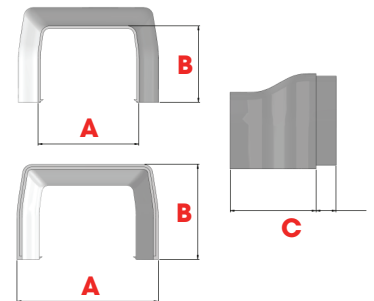
Flex Hose Connection Kit

- Material: ASA, UV Resistant
- Color: Pure White - CW903

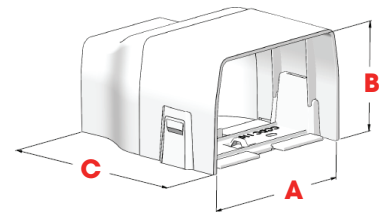
Size	White
3"	EG-FH3W
4"	EG-FH4W



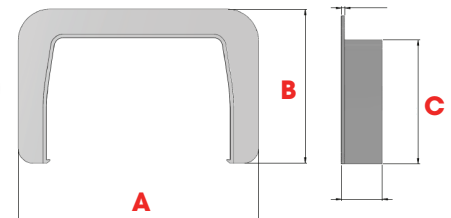
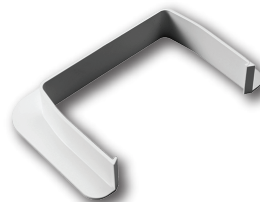
T-Joint



Reducer Coupling



Duct End



Soffit Fittings



Flex Hose Connection Kit