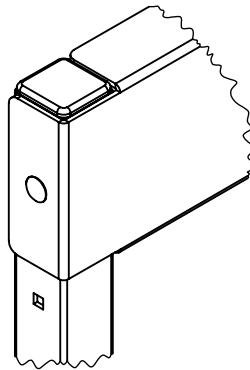
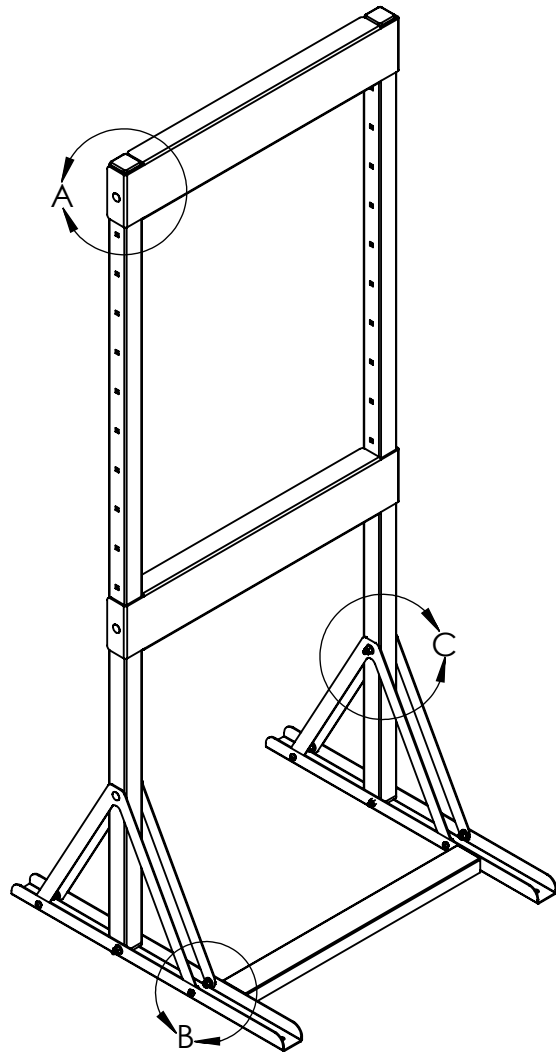
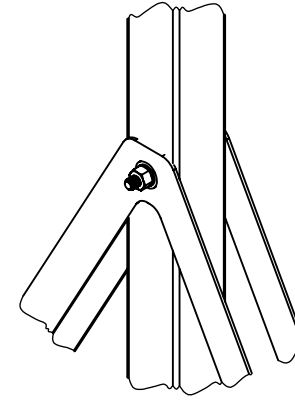


ITEM NO.	PART NUMBER	DRAWING NUMBER	DESCRIPTION	QTY.
1	QSBB4000	DT1001741	QSBB4000 FOOT SUBASSY	1
2	BB404	DT0001679	Boiler Bracket (Floor) Horz Beam	2
3	BB405	DT1001678	Boiler Bracket (Floor) V-Brace	4
4	BB406	DT1001742	QSBB4000 POST SUBASSY	2
5	HDKBB04 Kit	HDKBB04 Kit	QSBB4000 Hardware Kit	1
6.1	QSR101	DT0001680	1/4" Washer Zinc Plated	2
6.2	QSR013		1/4-20 Nylon Lock Nut	2
6.3	QSR103	DT0001681	1/4"-20 x 2-1/4" Zinc-Plated Steel Square-Neck Carriage Bolt	2

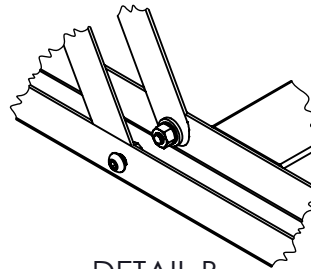
ALL DRAWINGS AND WRITTEN MATERIAL CONTAINED HEREIN ARE THE PROPERTY OF DIVERSITECH CORP AND MAY NOT BE DUPLICATED OR DISCLOSED AT ANY TIME UNLESS APPROVED IN WRITING BY DIVERSITECH CORP INTERPRET THIS DRAWING IN ACCORDANCE WITH ASME Y14.5-2009 DIMENSIONING AND TOLERANCING STANDARDS	UNLESS OTHERWISE SPECIFIED DIMENSIONS & TOLERANCES ARE IN INCHES / [mm]			MATERIAL: SEE NOTES FINISH: SEE NOTES *DO NOT SCALE*		TITLE		SIZE
	ANG. MACH.	±0.25°				QSBB4000 Assembly		A
	ANG. BEND	±1°		THIRD ANGLE PROJECTION 	NAME	DATE	DRAWING NUMBER	REVISION
	DECIMALS	INCHES	[mm]		DRAWN	dschlender	04 Jun 19	DT0001664
X	±0.1	±2	ENG APPR.				SCALE: 1:2	WT. (lbs): 39.70
X.X	±0.05	±0.1	MFG APPR.					
X.XX	±0.01	±0.03						
X.XXX	±0.005	±0.13						



DETAIL A
SCALE 1 : 4



DETAIL C
SCALE 1 : 4



DETAIL B
SCALE 1 : 4

ALL DRAWINGS AND WRITTEN MATERIAL CONTAINED HEREIN ARE THE PROPERTY OF DIVERSITECH CORP AND MAY NOT BE DUPLICATED OR DISCLOSED AT ANY TIME UNLESS APPROVED IN WRITING BY DIVERSITECH CORP

UNLESS OTHERWISE SPECIFIED DIMENSIONS & TOLERANCES ARE IN INCHES / [mm]

MATERIAL: SEE NOTES
FINISH: SEE NOTES



TITLE

SIZE

QSBB4000 Assembly

A

DO NOT SCALE

THIRD ANGLE PROJECTION



NAME

DATE

DRAWING NUMBER

REVISION

DRAWN

dschlender

04 Jun 19

DT0001664

B

ENG APPR.

MFG APPR.

SCALE: 1:15

WT. (lbs): 39.70

SHEET 2 OF 2

INTERPRET THIS DRAWING IN ACCORDANCE WITH ASME Y14.5-2009 DIMENSIONING AND TOLERANCING STANDARDS

ANG. MACH.	±0.25°		
ANG. BEND	±1°		
DECIMALS	INCHES	[mm]	
X	±0.1	±2	
X.X	±0.05	±0.1	
X.XX	±0.005	±0.02	
X.XXX	±0.002	±N/A	