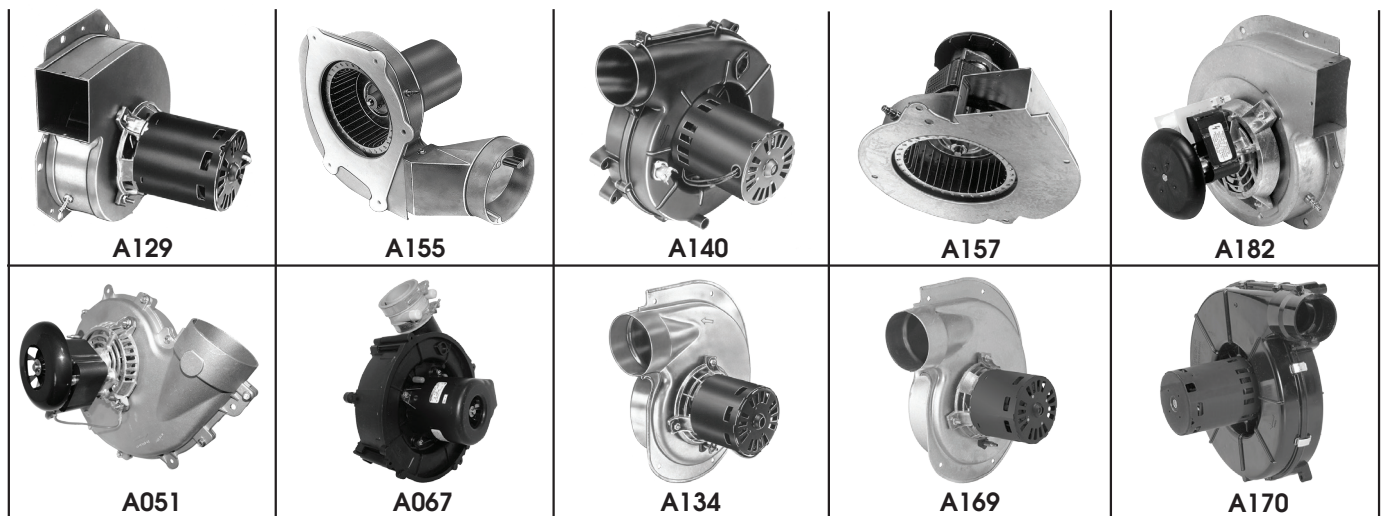


## FASCO<sup>®</sup> OEM Replacement Draft Inducers

Designed, engineered and life-tested in the USA by FASCO.  
OEM approved for aftermarket replacement.

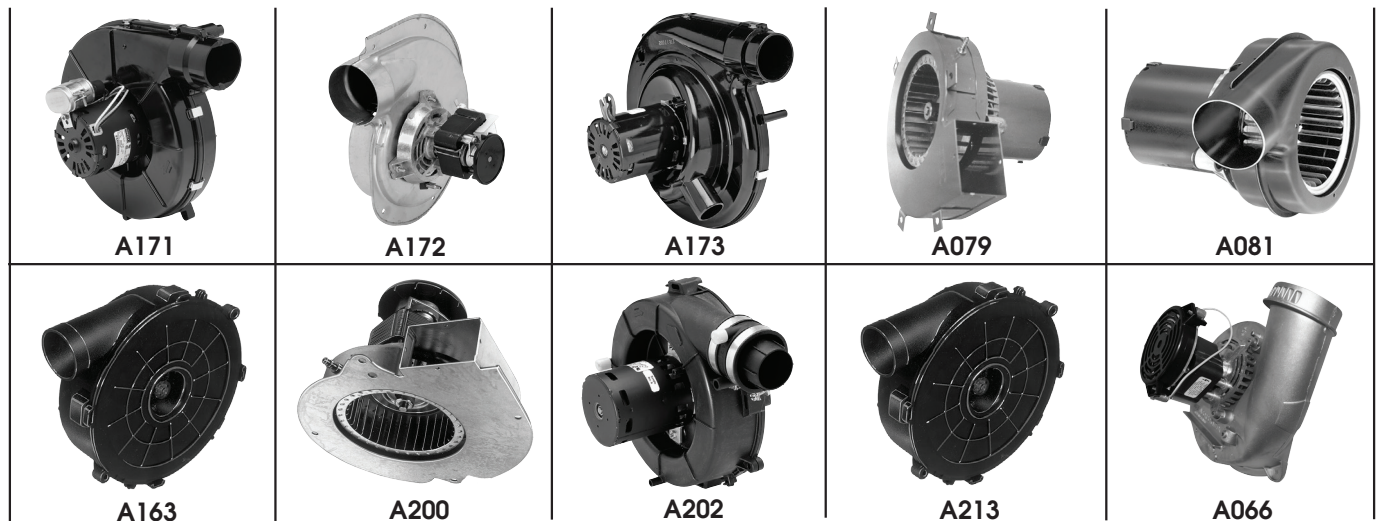
- Performance to match the original design.
- Fit for proper operation of the safety pressure switch and condensate management system.
- UL recognized, CSA or cUL certified.
- Safety for your customers and your business.



ITEM #	HP	VOLTS	AMPS	TYPE	SPD.	RPM	ROT.	BRNG.	FRAME	OEM CROSS REFERENCE	LIST PRICE
<b>AMANA</b>											
<b>A129</b>	1/20	115	1.95	SP	1	3250	CW	SLV	3.3	Amana, 7021-9064, 7021-9259	<b>\$576.00</b>
<b>ARMSTRONG</b>											
<b>A155</b>	1/30	115	1.4	SP	1	3000	CCW	BALL	3.3	7021-10046	<b>\$496.00</b>
<b>GOODMAN</b>											
<b>A140</b>	1/50	115	1.4	SP	1	3400	CW	SLV	3.3	7021-9087, 7021-9000	<b>\$416.00</b>
<b>A157</b>	1/35	115	1.3	SP	1	3000	CCW	SLV	-	7002-2307	<b>\$328.00</b>
<b>A182</b>	1/35	115	1.2	SP	1	3125	CCW	SLV	3.3	7002-3036, B4059000	<b>\$388.00</b>
<b>INTERCITY PRODUCTS</b>											
<b>A051</b>	1/60	115	1.6	SP	1	3000	CW	BALL	-	1013833.J238-1393	<b>\$308.00</b>
<b>A067</b>	1/20	115	2.6	SP	1	3000	CW	BALL	3.3	1014338, 119225-00	<b>\$364.00</b>
<b>A134</b>	1/25	115	1.5	SP	1	3060	CW	SLV	3.3	7021-9335, 7021-8735, 7021-9499, 7021-8736	<b>\$376.00</b>
<b>A169</b>	1/25	230	0.75	SP	1	2800	CW	SLV	3.3	7021-10048, 7021-10580	<b>\$580.00</b>
<b>A170</b>	1/25	115	2.3	SP	1	3400	CCW	BALL	3.3	7021-10702, 7021-10299	<b>\$612.00</b>

All rotation is determined by looking at shaft end.

## FASCO<sup>®</sup> OEM Replacement Draft Inducers (cont.)



ITEM #	HP	VOLTS	AMPS	TYPE	SPD.	RPM	ROT.	BRNG.	FRAME	OEM CROSS REFERENCE	LIST PRICE
<b>INTERCITY PRODUCTS</b>											
<b>A171</b>	1/25	115	0.7	PSC	1	3450	CCW	BALL	3.3	7062-4783, 1011412	<b>\$596.00</b>
<b>A172</b>	1/35	115	1.6	SP	1	3000	CW	BALL	-	7002-2792, 1010975P	<b>\$288.00</b>
<b>A173</b>	1/18	115	0.8	PSC	1	3450	CCW	BALL	3.3	7062-4578, 1011350	<b>\$768.00</b>
<b>JANITROL</b>											
<b>A079</b>	1/50	115	1.1	SP	1	3000	CCW	SLV	3.3	7021-6804	<b>\$380.00</b>
<b>JOHNSON FURNACE</b>											
<b>A081<sup>1</sup></b>	1/40	230	0.5	SP	1	3000	CCW	BALL	3.3	HWC Series Unit	<b>\$404.00</b>
<b>LENNOX</b>											
<b>A163</b>	1/20	115	1.8	SP	1	3400	CCW	BALL	3.3	7021-9450	<b>\$444.00</b>
<b>A200</b>	1/30	115	1.95	SP	1	3000	CCW	SLV	-	7002-2975, 31L5501	<b>\$240.00</b>
<b>A202</b>	1/30	115	1.8	SP	1	3400	CCW	BALL	3.3	7021-10602, 45037-001	<b>\$388.00</b>
<b>A213</b>	1/25	115	2.1	SP	2	3200	CCW	BALL	3.3	7021-10376, 18L0401	<b>\$532.00</b>
<b>RHEEM-RUUD</b>											
<b>A066</b>	1/30	120	1.27	SP	1	3000	CW	BALL	3.3	70-24157-03, 117847-00	<b>\$480.00</b>

All rotation is determined by looking at shaft end.  
 Note: 1. 3-1/2" motor body length

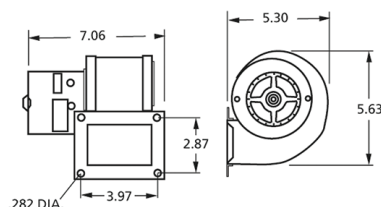
## FASCO<sup>®</sup> OEM Replacement Draft Inducers (cont.)



ITEM #	HP	VOLTS	AMPS	TYPE	SPD.	RPM	ROT.	BRNG.	FRAME	OEM CROSS REFERENCE	LIST PRICE
<b>TRANE</b>											
<b>A241</b>	1/25	208-230	0.62	SP	1	3200	CW	SLV	3.3	7021-9567, 70-23641-81	<b>\$480.00</b>
<b>A143</b>	1/50	115	0.95	SP	1	3000	CW	SLV	3.3	7021-8428, 7021-8013, 7021-8924	<b>\$316.00</b>
<b>A150</b>	1/35	208-230	0.5	SP	1	3000	CCW	SLV	3.3	7021-7833, 7021-8928	<b>\$364.00</b>
<b>A196</b>	1/25	115	1.35	SP	1	3200	CW	SLV	3.3	7021-11544, D342094P02, 7021-9010, D330757P02	<b>\$340.00</b>
<b>A269</b>	1/35	208-230	0.58/6	SP	1	2500, 3000	CCW	BALL	3.3	7021-11054, X38040363010	<b>\$420.00</b>
<b>A361</b>	1/42	115	1.6	SP	1	3000	CW	BALL	-	7002-2558, D330787P01	<b>\$444.00</b>
<b>YORK</b>											
<b>A137</b>	1/25	115	0.7	PSC	1	3450	CW	SLV	3.3	7062-2442, 7062-3342, 7062-3484	<b>\$680.00</b>
<b>A223</b>	1/30	208-230	0.64	SP	1	3200	CW	SLV	3.3	7021-10096, 026-33999-001, 7021-9656	<b>\$424.00</b>
<b>A225</b>	1/15	115	2.25	SP	1	3200	CW	BALL	3.3	7021-11577, 17503, 7021-11830, 024-34558-000	<b>\$468.00</b>

All rotation is determined by looking at shaft end.

<b>CENTRIFUGAL BLOWERS</b>																		
ITEM #	CFM AT STATIC PRESSURE SHOWN STATIC PRESSURE (INCHES OF WATER)										NAMEPLATE CFM	VOLTS	FREQ.	NO. OF SPEEDS	RPM@ FREE AIR	AMPS@ FREE AIR	BRNG.	PROMO PRICE
	0.1	0.2	0.3	0.4	0.5	0.6	0.7	0.8	0.9	1.0								
<b>A166</b>	110	100	95	85	82	60	40	10	-	-	115	115	50/60	1	3200	1.4	SLV	<b>\$240.00</b>



**A166 DIMENSIONS**